

NEC Rand (US-12) & Cuba

Kildeer, IL | 60047

Available

For Sale, Ground Lease, Or Build-To-Suit



- ▶ ±1.93 acre, ±1.93 acre and ±1.75 acre parcels available
- ▶ New development site at the northeast corner of Rand Road and Cuba Road
- ▶ Parcels available for ground lease, build-to-suit, and for sale
- ▶ Located in front of a brand new 27.1 acre residential development

DEMOGRAPHICS

	1 MILE	3 MILES	5 MILES
Estimated Population	7,795	40,454	136,908
Adj. Daytime Demographics	6,923	42,481	133,968
Estimated Households	2,480	14,416	50,936
Estimated Average Household Income	\$179,367	\$172,122	\$152,259

ALLEN JOFFE
312.275.3120
allen@baumrealty.com

MARK FREDERICKS
312.275.3109
mark@baumrealty.com



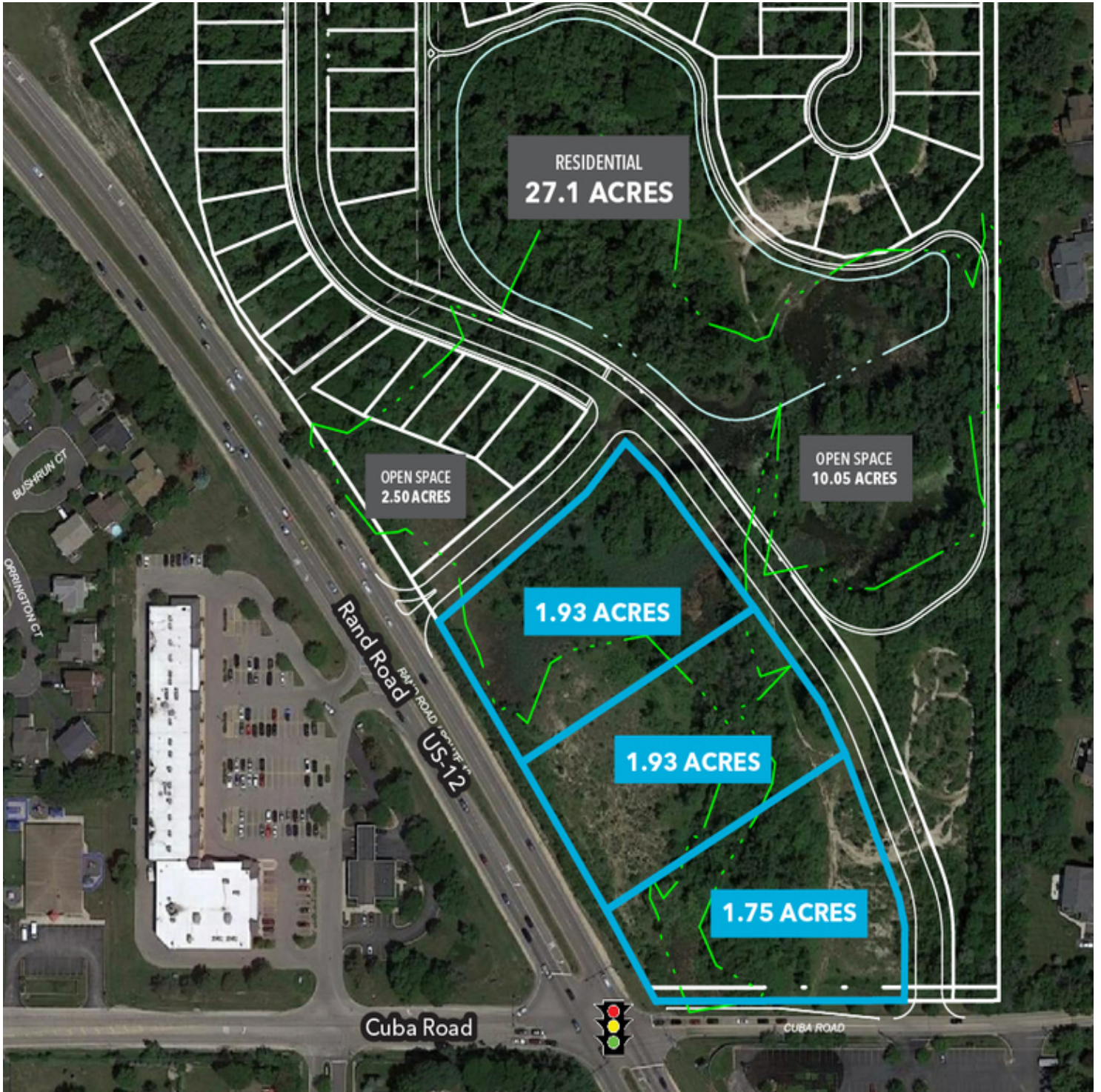
© 2020 All information supplied is from sources deemed reliable and is furnished subject to errors, omissions, modifications, removal of the listing from sale or lease, and to any listing conditions, including the rates and manner of payment of commissions for particular offerings, the terms of which are available to principals or duly licensed brokers. Any square footage dimensions set forth are approximate.

NEC Rand (US-12) & Cuba

Kildeer, IL | 60047

Available

For Sale, Ground Lease, Or Build-To-Suit



ALLEN JOFFE
312.275.3120
allen@baumrealty.com

MARK FREDERICKS
312.275.3109
mark@baumrealty.com



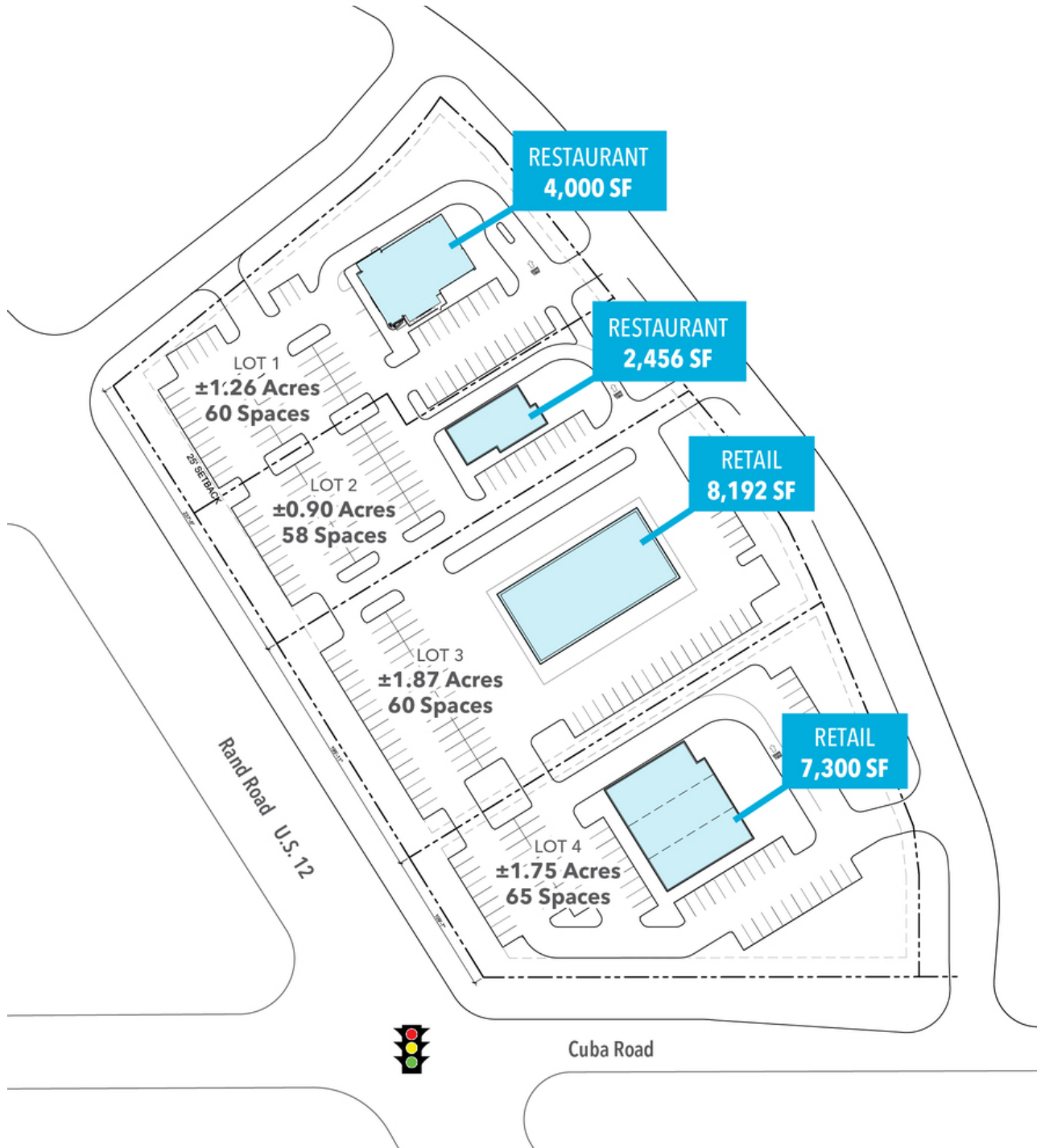
© 2020 All information supplied is from sources deemed reliable and is furnished subject to errors, omissions, modifications, removal of the listing from sale or lease, and to any listing conditions, including the rates and manner of payment of commissions for particular offerings, the terms of which are available to principals or duly licensed brokers. Any square footage dimensions set forth are approximate.

NEC Rand (US-12) & Cuba

Kildeer, IL | 60047

Available

For Sale, Ground Lease, Or Build-To-Suit



Example Site Plan

ALLEN JOFFE
312.275.3120
allen@baumrealty.com

MARK FREDERICKS
312.275.3109
mark@baumrealty.com



© 2020 All information supplied is from sources deemed reliable and is furnished subject to errors, omissions, modifications, removal of the listing from sale or lease, and to any listing conditions, including the rates and manner of payment of commissions for particular offerings, the terms of which are available to principals or duly licensed brokers. Any square footage dimensions set forth are approximate.

NEC Rand (US-12) & Cuba
Kildeer, IL 60047



Google

Map data ©2021 Google Imagery ©2021, Maxar Technologies, U.S. Geological Survey, USDA Farm Service Agency



© 2020 All information supplied is from sources deemed reliable and is furnished subject to errors, omissions, modifications, removal of the listing from sale or lease, and to any listing conditions, including the rates and manner of payment of commissions for particular offerings, the terms of which are available to principals or duly licensed brokers. Any square footage dimensions set forth are approximate.

