

3119-3125 W. Irving Park Road

CHICAGO, IL 60618 | IRVING PARK

For Sale

CORNER RETAIL BUILDING WITH PARKING



BUILDING INFORMATION

ASKING PRICE: \$750,000

LAND SIZE: 10,640 SF

BUILDING SIZE: ±5,538 SF

2023 RE TAXES: \$28,590

ZONING: B3-1

PROPERTY HIGHLIGHTS

- ▶ ±5,538 SF building on 10,640 SF site (85.12 x 125)
- ▶ Highly visible and trafficked location located at the SEC of Irving Park & Troy
- ▶ Curb cut on Troy Street providing access to the ±5,102 SF parking lot
 - › Convenient and easily accessible location
 - › 1.2 miles from I-90/94
 - › 1.2 blocks from CTA Blue Line (Irving Park station)
 - › Less than 150' from CTA Bus Stop (Irving Park & Albany)

OWEN WIESNER

owen@baumrealty.com
312.275.3119

ARI TOPPER, CFA

ari@baumrealty.com
312.275.3113

TYLER DECHTER

tyler@baumrealty.com
312.275.3132



© 2024 All information supplied is from sources deemed reliable and is furnished subject to errors, omissions, modifications, removal of the listing from sale or lease, and to any listing conditions, including the rates and manner of payment of commissions for particular offerings, the terms of which are available to principals or duly licensed brokers. Any square footage dimensions set forth are approximate.

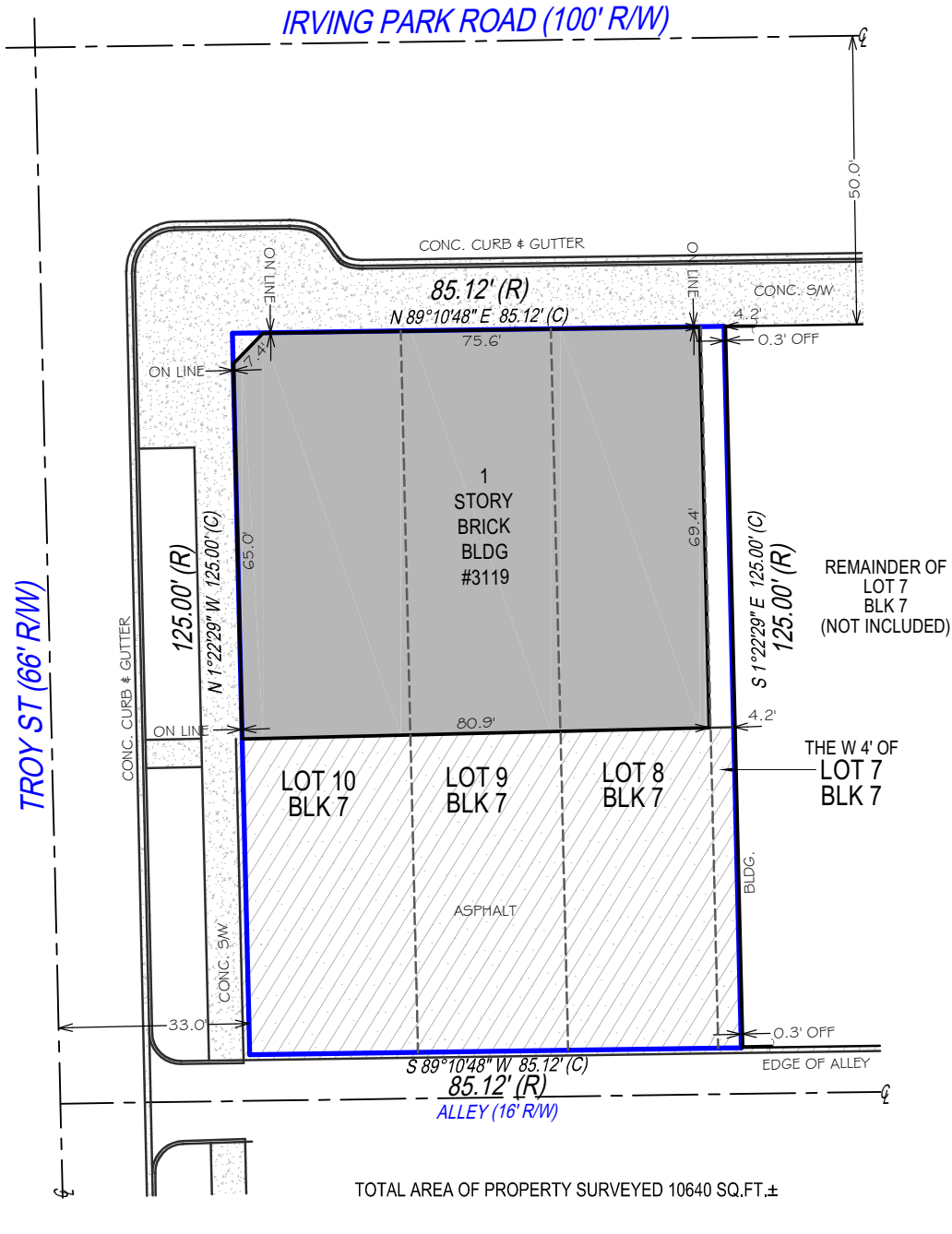
3119-3125 W. Irving Park Road

CHICAGO, IL 60618 | IRVING PARK

For Sale

CORNER RETAIL BUILDING WITH PARKING

SURVEY



OWEN WIESNER

owen@baumrealty.com
312.275.3119

ARI TOPPER, CFA

ari@baumrealty.com
312.275.3113

TYLER DECHTER

tyler@baumrealty.com
312.275.3132



© 2024 All information supplied is from sources deemed reliable and is furnished subject to errors, omissions, modifications, removal of the listing from sale or lease, and to any listing conditions, including the rates and manner of payment of commissions for particular offerings, the terms of which are available to principals or duly licensed brokers. Any square footage dimensions set forth are approximate.

3119-3125 W. Irving Park Road

CHICAGO, IL 60618 | IRVING PARK

For Sale

CORNER RETAIL BUILDING WITH PARKING

EXTERIOR IMAGES



OWEN WIESNER

owen@baumrealty.com
312.275.3119

ARI TOPPER, CFA

ari@baumrealty.com
312.275.3113

TYLER DECHTER

tyler@baumrealty.com
312.275.3132



© 2024 All information supplied is from sources deemed reliable and is furnished subject to errors, omissions, modifications, removal of the listing from sale or lease, and to any listing conditions, including the rates and manner of payment of commissions for particular offerings, the terms of which are available to principals or duly licensed brokers. Any square footage dimensions set forth are approximate.

3119 - 3125 W Irving Park Rd
Chicago, IL

