

# 2004 W. Roscoe Street

CHICAGO, IL 60618 | ROSCOE VILLAGE

# For Lease

RETAIL SPACE



- ▶ ±1,100 SF available with ±500 SF basement
- ▶ Opportunity to lease storefront located at Roscoe & Damen in Roscoe Village
- ▶ Large storefront windows and amazing pedestrian traffic
- ▶ One ADA restroom in place
- ▶ Back patio and front patio options available
- ▶ Join neighboring tenants Starbucks, Volo, Same Same, Commonwealth, Reveler, Roost, Village Tap, The Region, Cuba 312, Jimmy Johns and many more

## DEMOGRAPHIC SUMMARY

	.25 Mi	.50 Mi	1 Mi
Estimated Population	4,953	18,298	59,223
Adj. Daytime Demographics	3,107	12,564	49,746
Estimated Households	2,057	7,819	25,708
Estimated Average Household Income	\$219,638	\$216,840	\$208,466

### CHUCK WHITLOCK

chuck@baumrealty.com

312.275.3133



© 2022 All information supplied is from sources deemed reliable and is furnished subject to errors, omissions, modifications, removal of the listing from sale or lease, and to any listing conditions, including the rates and manner of payment of commissions for particular offerings, the terms of which are available to principals or duly licensed brokers. Any square footage dimensions set forth are approximate.

# 2004 W. Roscoe Street

CHICAGO, IL 60618 | ROSCOE VILLAGE

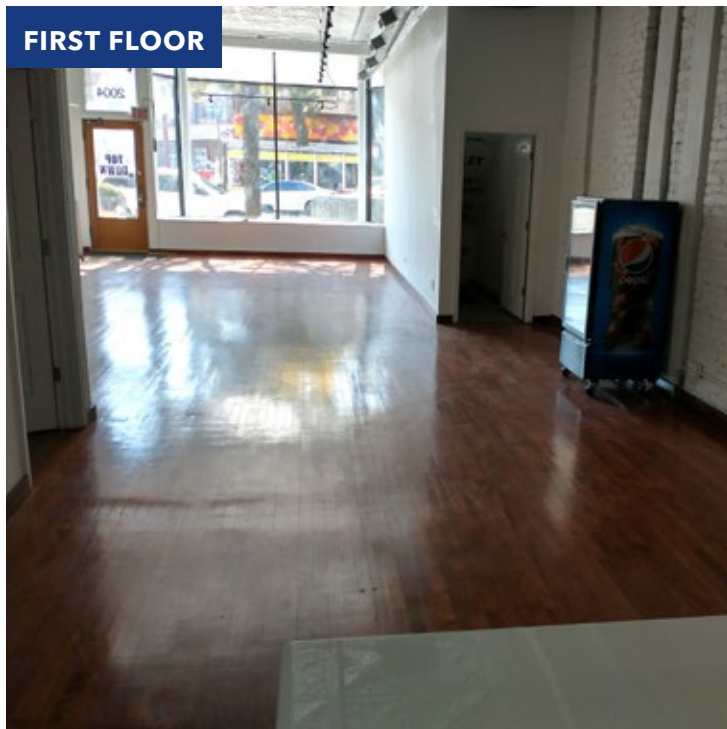
# For Lease

RETAIL SPACE

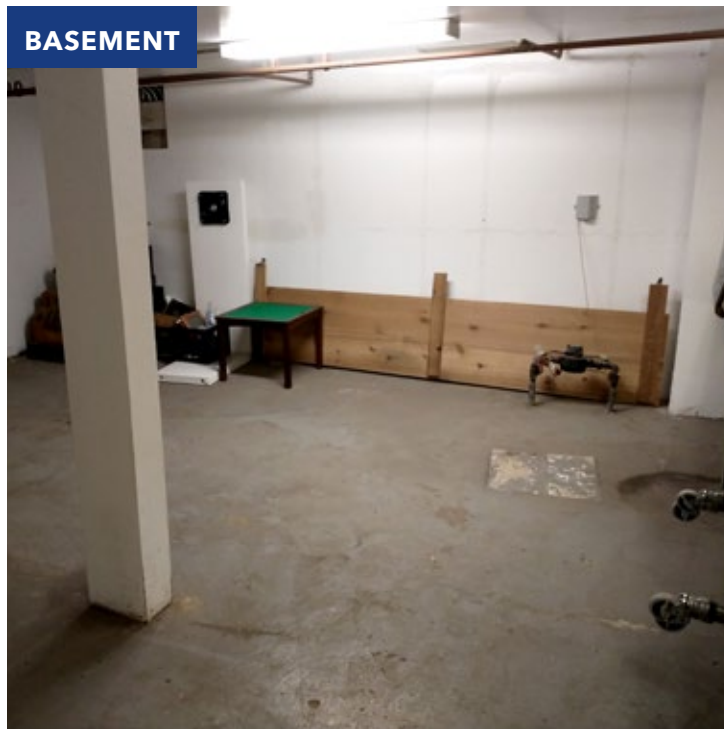
## FIRST FLOOR



## FIRST FLOOR



## BASEMENT



### CHUCK WHITLOCK

chuck@baumrealty.com

312.275.3133



© 2022 All information supplied is from sources deemed reliable and is furnished subject to errors, omissions, modifications, removal of the listing from sale or lease, and to any listing conditions, including the rates and manner of payment of commissions for particular offerings, the terms of which are available to principals or duly licensed brokers. Any square footage dimensions set forth are approximate.

BAUM REALTY GROUP, LLC · 1030 W. CHICAGO AVENUE, SUITE 200 · CHICAGO, IL 60642 · 312.666.3000 · WWW.BAUMREALTY.COM

2004 W. Roscoe Street  
Chicago, IL

