

2000 Skokie Valley Road

HIGHLAND PARK, IL 60035

Sublease

RETAIL SPACE



- ▶ ±13,225 SF available
- ▶ Excellent sublease opportunity at the northwest corner of Skokie Valley Road & Park Avenue West
- ▶ Great visibility with multiple access points provides opportunity for tenants
- ▶ Large parking field with signage potential
- ▶ Area tenants include Target, Starbucks, Denny's, Dunkin', Trek Bicycle, Foss Swim School and many more
- ▶ Lease expires 12/31/2037

DEMOGRAPHIC SUMMARY

	1 Mi	3 Mi	5 Mi
Estimated Population	6,537	57,403	114,494
Adj. Daytime Population	6,454	66,618	170,897
Estimated Households	2,471	21,604	42,339
Estimated Average Household Income	\$210,911	\$225,257	\$233,133

DOUG RENNER

doug.renner@baumrealty.com
312.275.3137

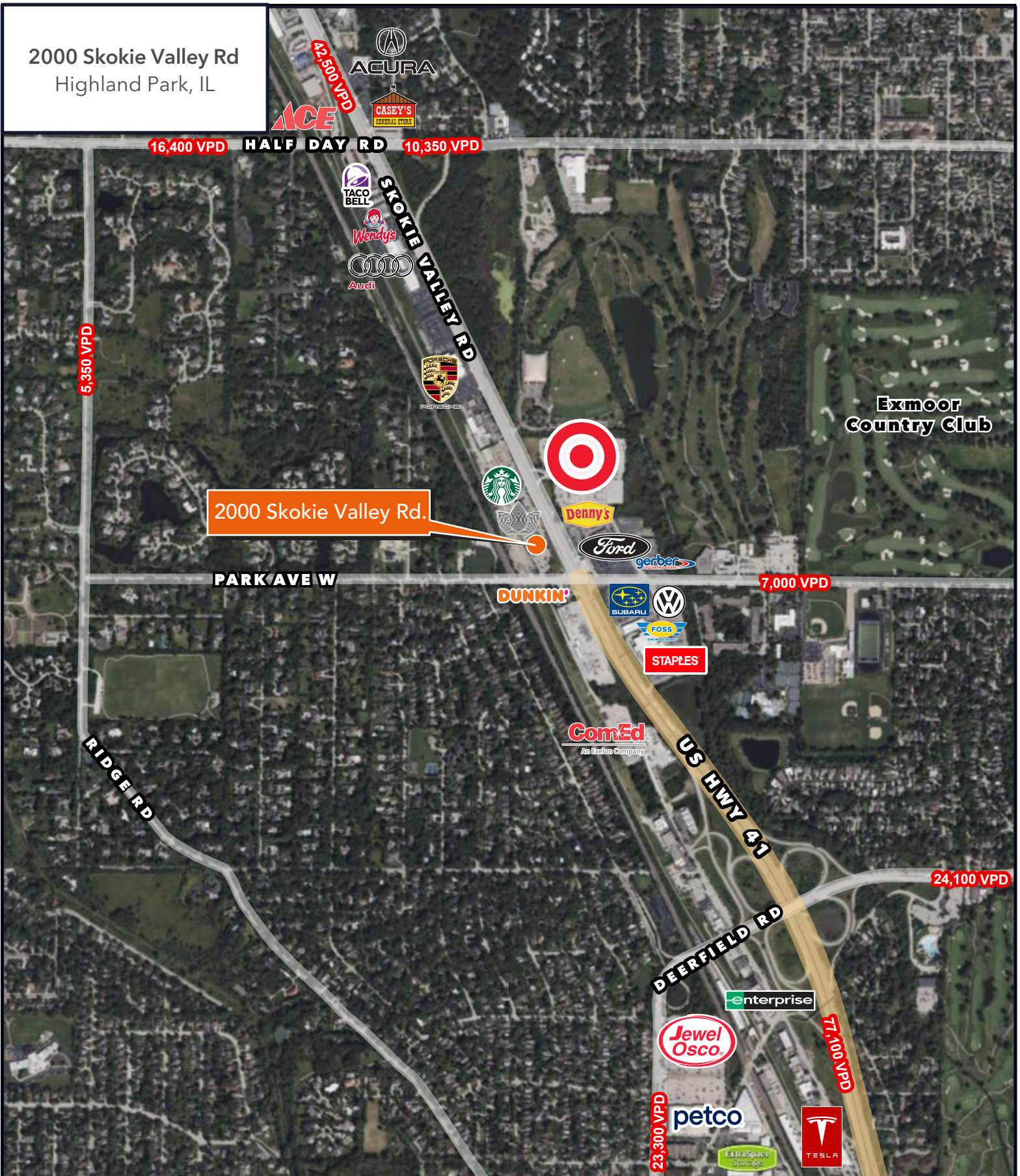
MARK FREDERICKS

mark@baumrealty.com
312.275.3109



© 2024 All information supplied is from sources deemed reliable and is furnished subject to errors, omissions, modifications, removal of the listing from sale or lease, and to any listing conditions, including the rates and manner of payment of commissions for particular offerings, the terms of which are available to principals or duly licensed brokers. Any square footage dimensions set forth are approximate.

2000 Skokie Valley Rd
Highland Park, IL



2000 Skokie Valley Rd.



This map was produced using data from private and government sources deemed reliable. The information herein is provided without representation or warranty. Copyright © 2023 Baum Realty Group, LLC. All rights reserved. www.baumrealty.com.

