

1258 W. Belmont Avenue

CHICAGO, IL 60657 | LAKEVIEW

For Lease

2ND GENERATION RESTAURANT



- ▶ ±4,080 SF available
- ▶ Incredible 2nd generation restaurant space opportunity in Lakeview one block from Southport Corridor
- ▶ Great layout with recent build out with three hoods in the kitchen (17', 6' and 3'), and a large walk in cooler
- ▶ Equipment can be included
- ▶ Excellent demographics in the area along with being located in one of the hottest neighborhoods in the city
- ▶ \$35 PSF NNN

DEMOGRAPHIC SUMMARY

	.25 Mi	.50 Mi	1 Mi
Estimated Population	5,875	22,888	94,351
Adj. Daytime Demographics	3,677	16,987	71,980
Estimated Households	2,568	10,746	47,044
Estimated Average Household Income	\$236,213	\$215,649	\$186,934

CHUCK WHITLOCK

chuck@baumrealty.com

312.275.3133



© 2023 All information supplied is from sources deemed reliable and is furnished subject to errors, omissions, modifications, removal of the listing from sale or lease, and to any listing conditions, including the rates and manner of payment of commissions for particular offerings, the terms of which are available to principals or duly licensed brokers. Any square footage dimensions set forth are approximate.

1258 W. Belmont Avenue

CHICAGO, IL 60657 | LAKEVIEW

For Lease

2ND GENERATION RESTAURANT



CHUCK WHITLOCK

chuck@baumrealty.com

312.275.3133



© 2023 All information supplied is from sources deemed reliable and is furnished subject to errors, omissions, modifications, removal of the listing from sale or lease, and to any listing conditions, including the rates and manner of payment of commissions for particular offerings, the terms of which are available to principals or duly licensed brokers. Any square footage dimensions set forth are approximate.

BAUM REALTY GROUP, LLC · 1030 W. CHICAGO AVENUE, SUITE 200 · CHICAGO, IL 60642 · 312.666.3000 · WWW.BAUMREALTY.COM

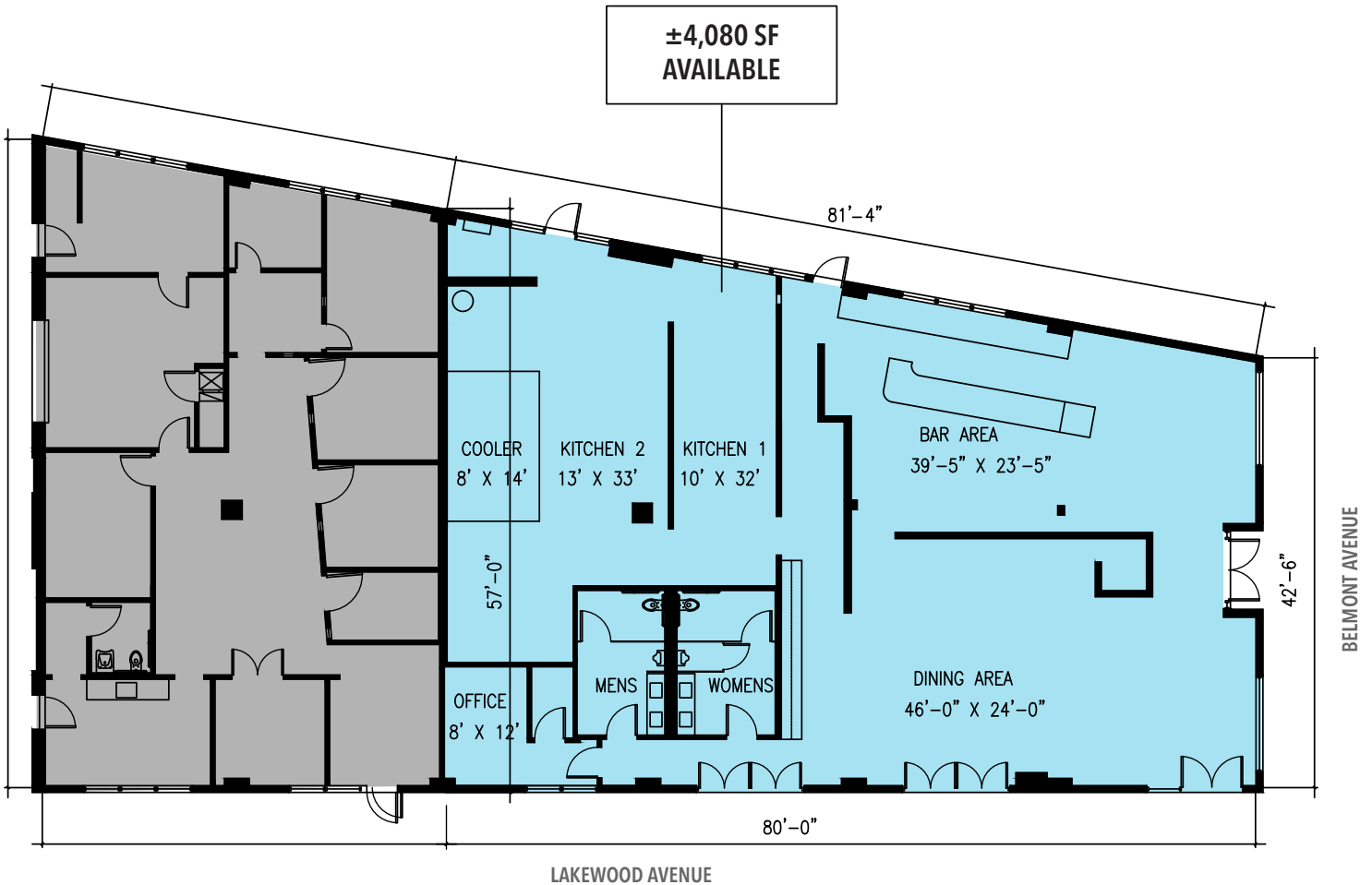
1258 W. Belmont Avenue

CHICAGO, IL 60657 | LAKEVIEW

For Lease

2ND GENERATION RESTAURANT

SITE PLAN



CHUCK WHITLOCK

chuck@baumrealty.com

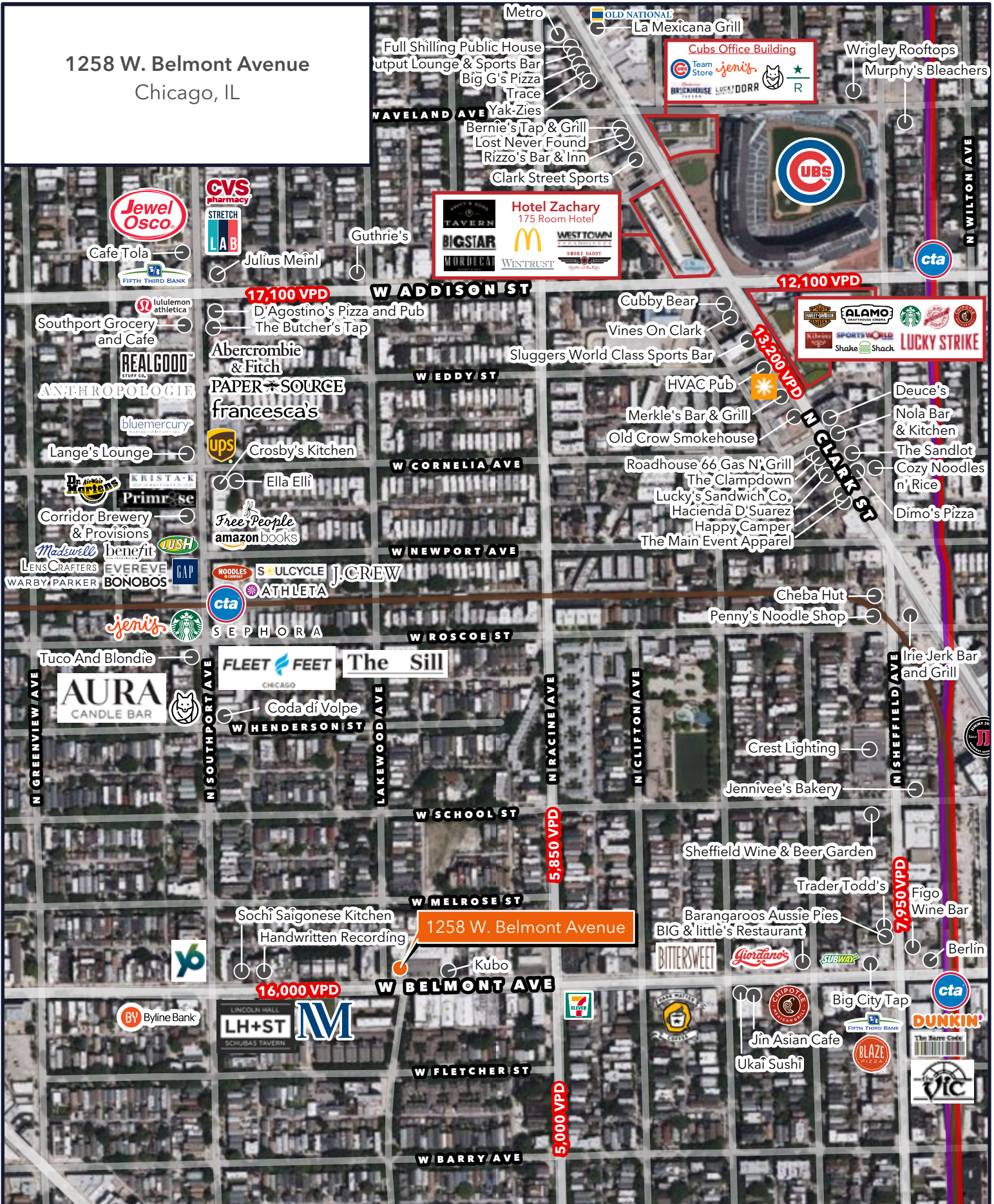
312.275.3133



© 2023 All information supplied is from sources deemed reliable and is furnished subject to errors, omissions, modifications, removal of the listing from sale or lease, and to any listing conditions, including the rates and manner of payment of commissions for particular offerings, the terms of which are available to principals or duly licensed brokers. Any square footage dimensions set forth are approximate.

BAUM REALTY GROUP, LLC · 1030 W. CHICAGO AVENUE, SUITE 200 · CHICAGO, IL 60642 · 312.666.3000 · WWW.BAUMREALTY.COM

1258 W. Belmont Avenue
Chicago, IL



This map was produced using data from private and government sources deemed reliable. The information herein is provided without representation or warranty. Copyright © 2023 Baum Realty Group, LLC. All rights reserved. www.baumrealty.com.

