

1258 W. Belmont Avenue

CHICAGO, IL 60657 | LAKEVIEW

For Lease

OFFICE / RETAIL SPACE



- ▶ ±2,420 SF turn-key space available
- ▶ Opportunity to escape your home office in Lakeview
- ▶ 9 private offices, with kitchenette, break room, and reception
- ▶ Dedicated entrance to suite with no common hallways or entryways
- ▶ Space could easily be converted to retail
- ▶ Access is on the side street, Lakewood Avenue

DEMOGRAPHIC SUMMARY

	.25 Mile	.5 Mile	1 Mile
Estimated Population	5,494	20,561	88,088
Estimated Daytime Population	4,473	18,796	80,739
Estimated Households	2,570	10,097	45,288
Estimated Average Household Income	\$212,786	\$194,287	\$166,522

CHUCK WHITLOCK

chuck@baumrealty.com

312.275.3133



© 2022 All information supplied is from sources deemed reliable and is furnished subject to errors, omissions, modifications, removal of the listing from sale or lease, and to any listing conditions, including the rates and manner of payment of commissions for particular offerings, the terms of which are available to principals or duly licensed brokers. Any square footage dimensions set forth are approximate.

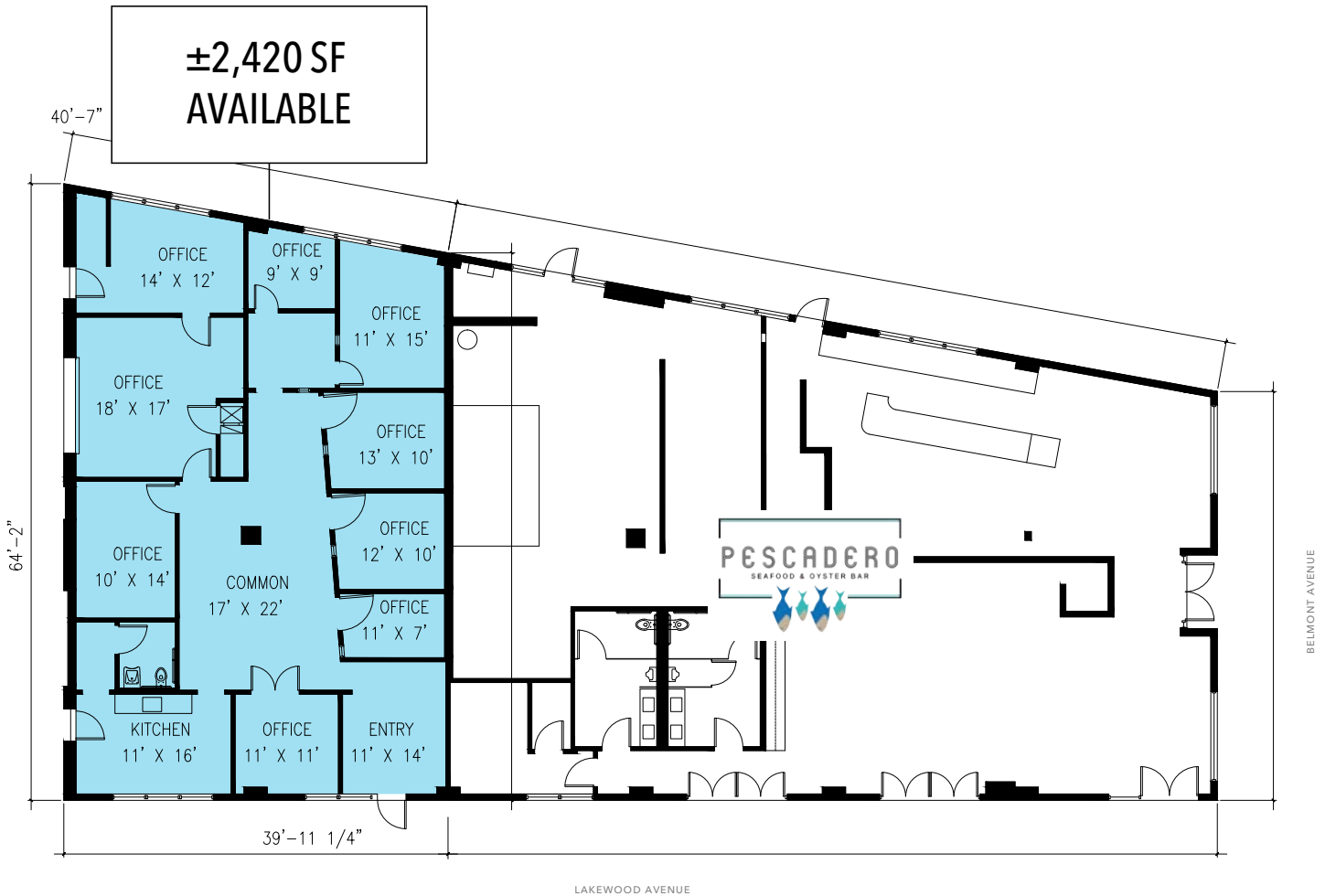
1258 W. Belmont Avenue

CHICAGO, IL 60657 | LAKEVIEW

For Lease

OFFICE / RETAIL SPACE

SITE PLAN



CHUCK WHITLOCK

chuck@baumrealty.com

312.275.3133



© 2022 All information supplied is from sources deemed reliable and is furnished subject to errors, omissions, modifications, removal of the listing from sale or lease, and to any listing conditions, including the rates and manner of payment of commissions for particular offerings, the terms of which are available to principals or duly licensed brokers. Any square footage dimensions set forth are approximate.

BAUM REALTY GROUP, LLC · 1030 W. CHICAGO AVENUE, SUITE 200 · CHICAGO, IL 60642 · 312.666.3000 · WWW.BAUMREALTY.COM

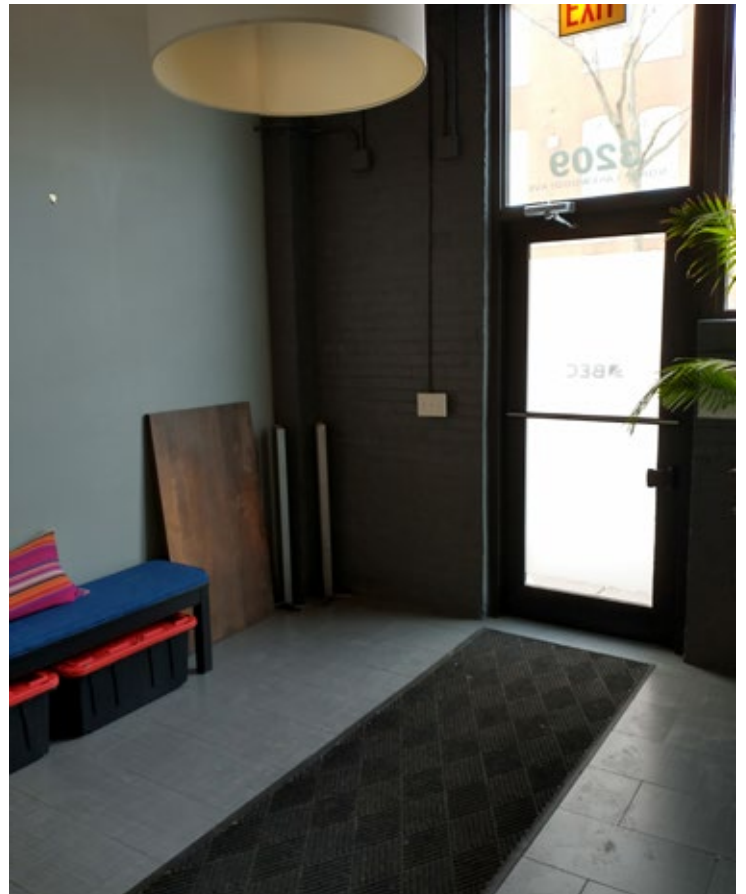
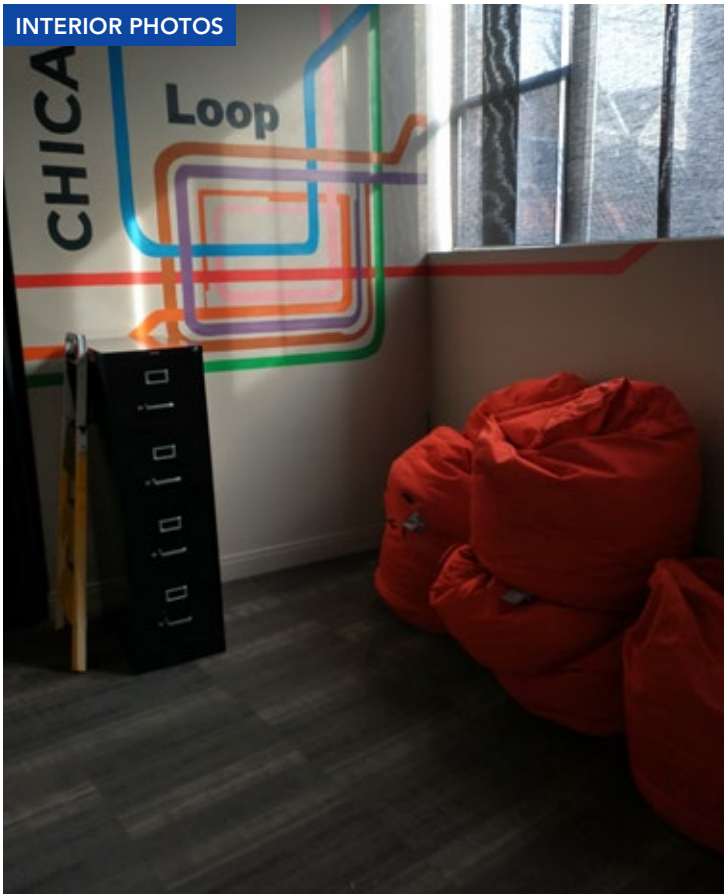
1258 W. Belmont Avenue

CHICAGO, IL 60657 | LAKEVIEW

For Lease

OFFICE / RETAIL SPACE

INTERIOR PHOTOS



CHUCK WHITLOCK

chuck@baumrealty.com

312.275.3133



© 2022 All information supplied is from sources deemed reliable and is furnished subject to errors, omissions, modifications, removal of the listing from sale or lease, and to any listing conditions, including the rates and manner of payment of commissions for particular offerings, the terms of which are available to principals or duly licensed brokers. Any square footage dimensions set forth are approximate.

BAUM REALTY GROUP, LLC · 1030 W. CHICAGO AVENUE, SUITE 200 · CHICAGO, IL 60642 · 312.666.3000 · WWW.BAUMREALTY.COM

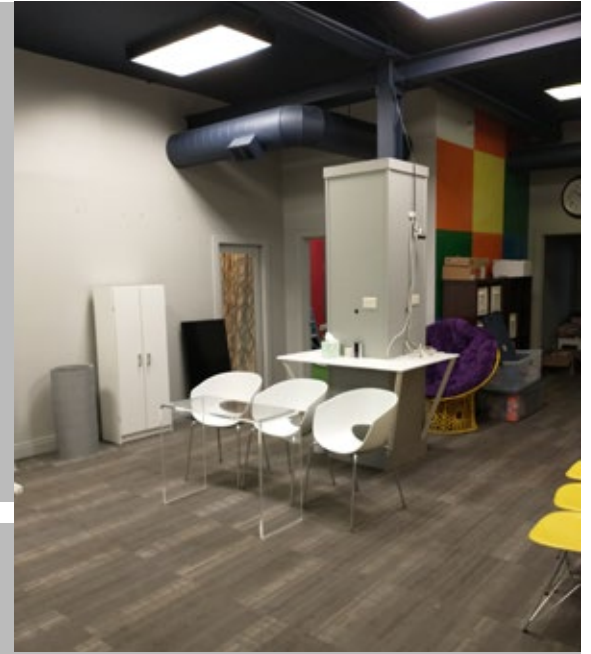
1258 W. Belmont Avenue

CHICAGO, IL 60657 | LAKEVIEW

For Lease

OFFICE / RETAIL SPACE

INTERIOR PHOTOS



CHUCK WHITLOCK

chuck@baumrealty.com

312.275.3133



© 2022 All information supplied is from sources deemed reliable and is furnished subject to errors, omissions, modifications, removal of the listing from sale or lease, and to any listing conditions, including the rates and manner of payment of commissions for particular offerings, the terms of which are available to principals or duly licensed brokers. Any square footage dimensions set forth are approximate.

BAUM REALTY GROUP, LLC · 1030 W. CHICAGO AVENUE, SUITE 200 · CHICAGO, IL 60642 · 312.666.3000 · WWW.BAUMREALTY.COM

1258 W Belmont Ave
Chicago, IL

