

1122-1126 W. Bryn Mawr Avenue

CHICAGO, IL 60660 | EDGEWATER

For Lease

RETAIL SPACE



CONCEPTUAL RENDERING

- ▶ Up to ±4,875 SF with demising options available
- ▶ Black iron available
- ▶ Private parking optional
- ▶ Adjacent to the CTA Red Line Bryn Mawr 'L' Stop (1.39M Riders in 2019)
- ▶ Access to Lake Shore Drive directly to the east
- ▶ Just off the heavily trafficked Broadway / Ridge/ Bryn Mawr intersection (60,600 combined VPD)
- ▶ 1 mile south of Loyola University
- ▶ Nearby retailers include Walgreens, Starbucks, Dunkin', Francesca's Restaurant, Chase & 7-Eleven

DEMOGRAPHIC SUMMARY

	.25 Mile	.5 Mile	1 Mile
Estimated Population	9,029	26,694	71,568
Adj. Daytime Demographics	7,447	22,273	63,079
Estimated Households	5,280	15,223	38,164
Estimated Average Household Income	\$63,586	\$78,135	\$80,000

DOUG RENNER

doug.renner@baumrealty.com

312.275.3137



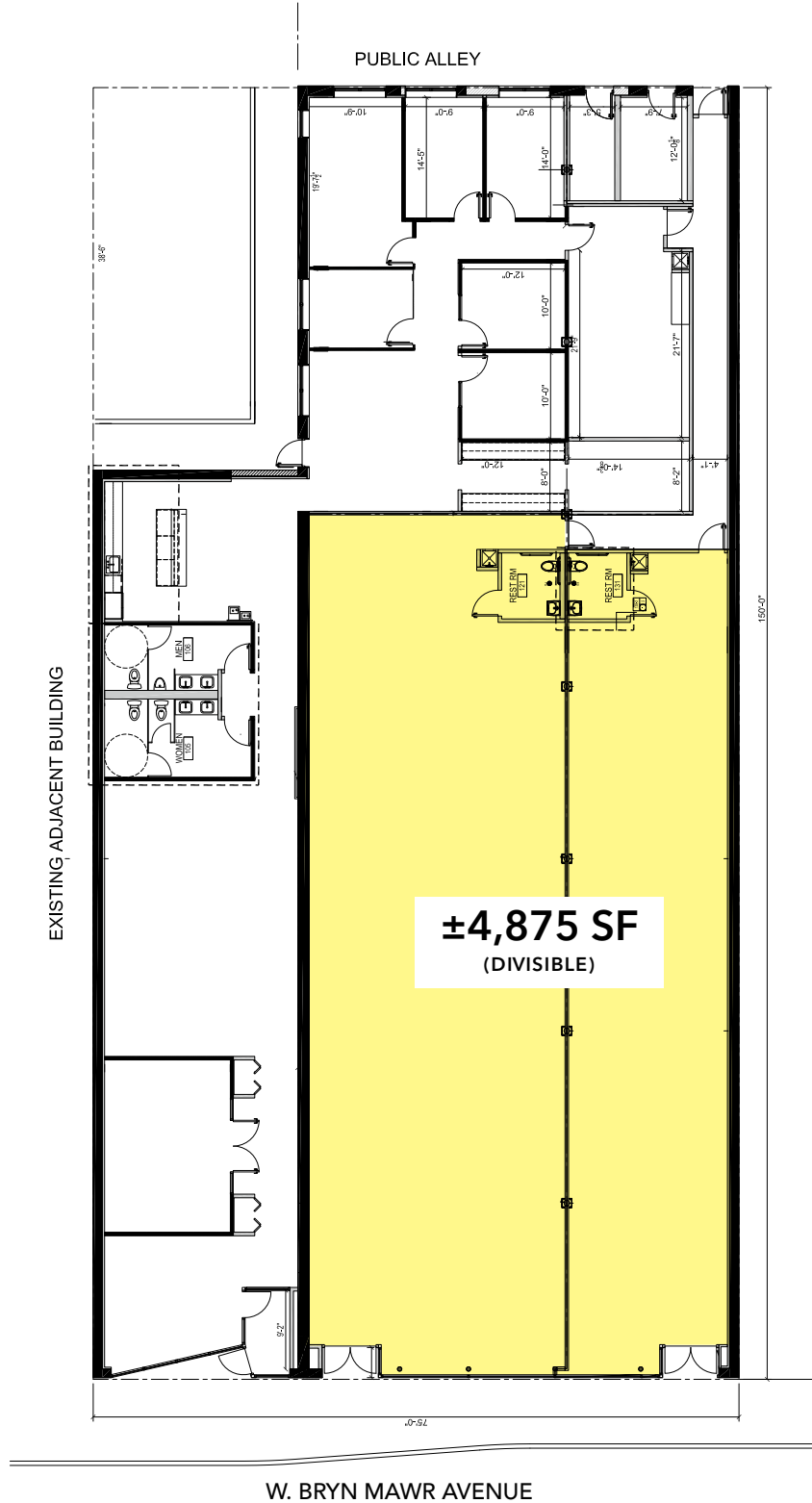
© 2023 All information supplied is from sources deemed reliable and is furnished subject to errors, omissions, modifications, removal of the listing from sale or lease, and to any listing conditions, including the rates and manner of payment of commissions for particular offerings, the terms of which are available to principals or duly licensed brokers. Any square footage dimensions set forth are approximate.

1122-1126 W. Bryn Mawr Avenue

CHICAGO, IL 60660 | EDGEWATER

For Lease

RETAIL SPACE



DOUG RENNER

doug.renner@baumrealty.com

312.275.3137



© 2023 All information supplied is from sources deemed reliable and is furnished subject to errors, omissions, modifications, removal of the listing from sale or lease, and to any listing conditions, including the rates and manner of payment of commissions for particular offerings, the terms of which are available to principals or duly licensed brokers. Any square footage dimensions set forth are approximate.

BAUM REALTY GROUP, LLC · 1030 W. CHICAGO AVENUE, SUITE 200 · CHICAGO, IL 60642 · 312.666.3000 · WWW.BAUMREALTY.COM

1122-1126 W. Bryn Mawr Avenue
Chicago, IL 60660



Map data ©2021 Imagery ©2021 . Maxar Technologies, Sanborn, U.S. Geological Survey, USDA Farm Service Agency



© 2020 All information supplied is from sources deemed reliable and is furnished subject to errors, omissions, modifications, removal of the listing from sale or lease, and to any listing conditions, including the rates and manner of payment of commissions for particular offerings, the terms of which are available to principals or duly licensed brokers. Any square footage dimensions set forth are approximate.

