

# 1 E. Rand Road

MOUNT PROSPECT, IL 60056

## For Lease

RETAIL SPACE



- ▶ ±1,000 SF - 22,000 SF available at the Rand / Kensington / Main (Rt-83) intersection in Mt. Prospect
- ▶ Located across the street from Randhurst Village
- ▶ Area tenants include O'Reilly Auto Parts, ATI Physical Therapy, Starbucks, Firehouse Subs, AMC Theaters, Bed Bath & Beyond, Costco, Chase Bank, Jewel-Osco and more
- ▶ 24,400 VPD on Rand Road
- ▶ 18,400 VPD on Main Street

### DEMOGRAPHIC SUMMARY

	1 Mile	3 Miles	5 Miles
Estimated Population	13,543	116,261	320,122
Estimated Daytime Population	14,617	113,806	353,666
Estimated Households	5,179	45,875	126,506
Estimated Average Household Income	\$115,237	\$123,796	\$111,236

#### DOUG RENNER

doug.renner@baumrealty.com  
312.275.3137

#### MARK FREDERICKS

mark@baumrealty.com  
312.275.3109



© 2022 All information supplied is from sources deemed reliable and is furnished subject to errors, omissions, modifications, removal of the listing from sale or lease, and to any listing conditions, including the rates and manner of payment of commissions for particular offerings, the terms of which are available to principals or duly licensed brokers. Any square footage dimensions set forth are approximate.

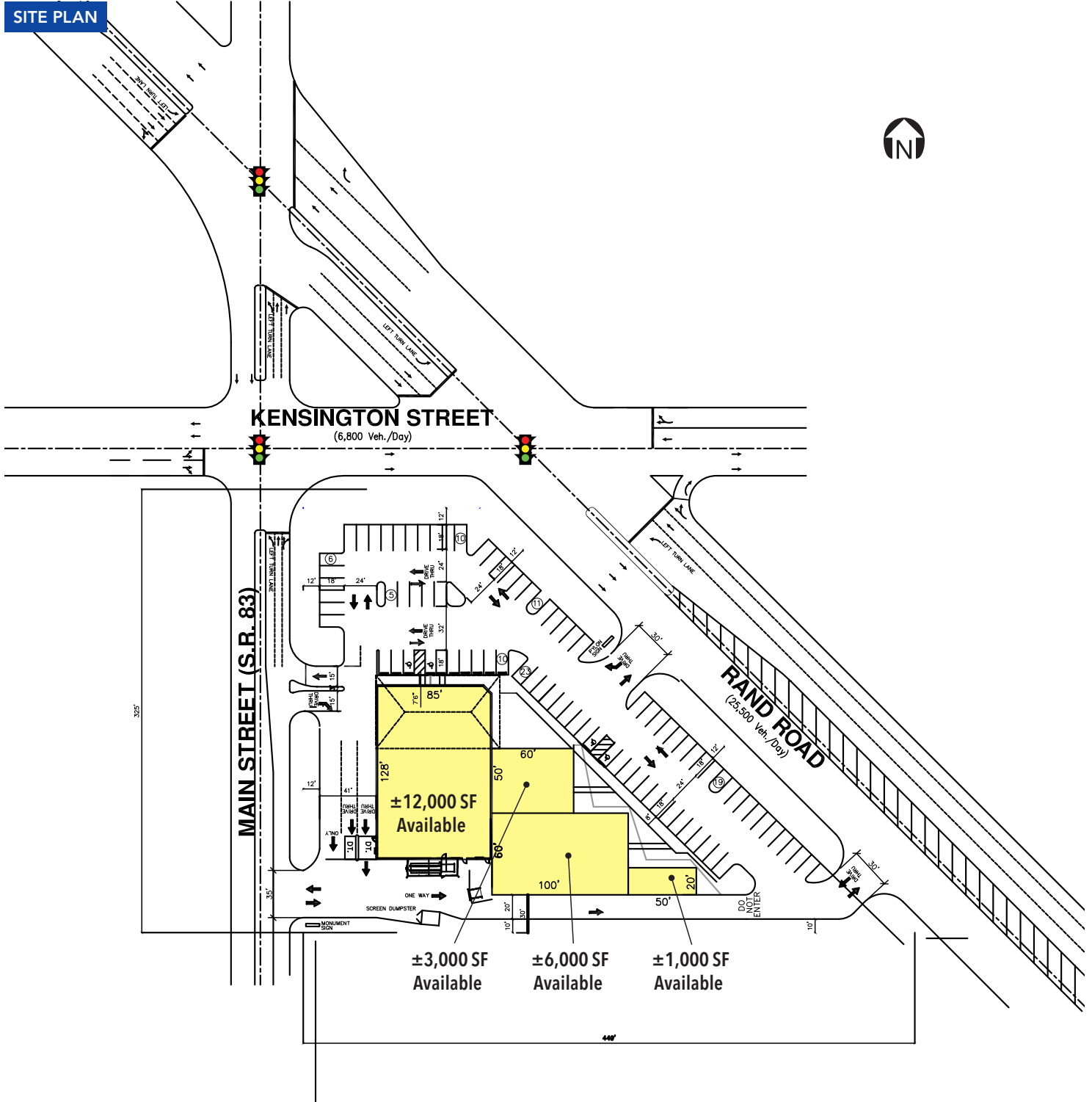
# 1 E. Rand Road

MOUNT PROSPECT, IL 60056

# For Lease

RETAIL SPACE

## SITE PLAN



**DOUG RENNER**  
doug.renner@baumrealty.com  
312.275.3137

**MARK FREDERICKS**  
mark@baumrealty.com  
312.275.3109



© 2022 All information supplied is from sources deemed reliable and is furnished subject to errors, omissions, modifications, removal of the listing from sale or lease, and to any listing conditions, including the rates and manner of payment of commissions for particular offerings, the terms of which are available to principals or duly licensed brokers. Any square footage dimensions set forth are approximate.

1 E Rand Rd  
Mt Prospect, IL

