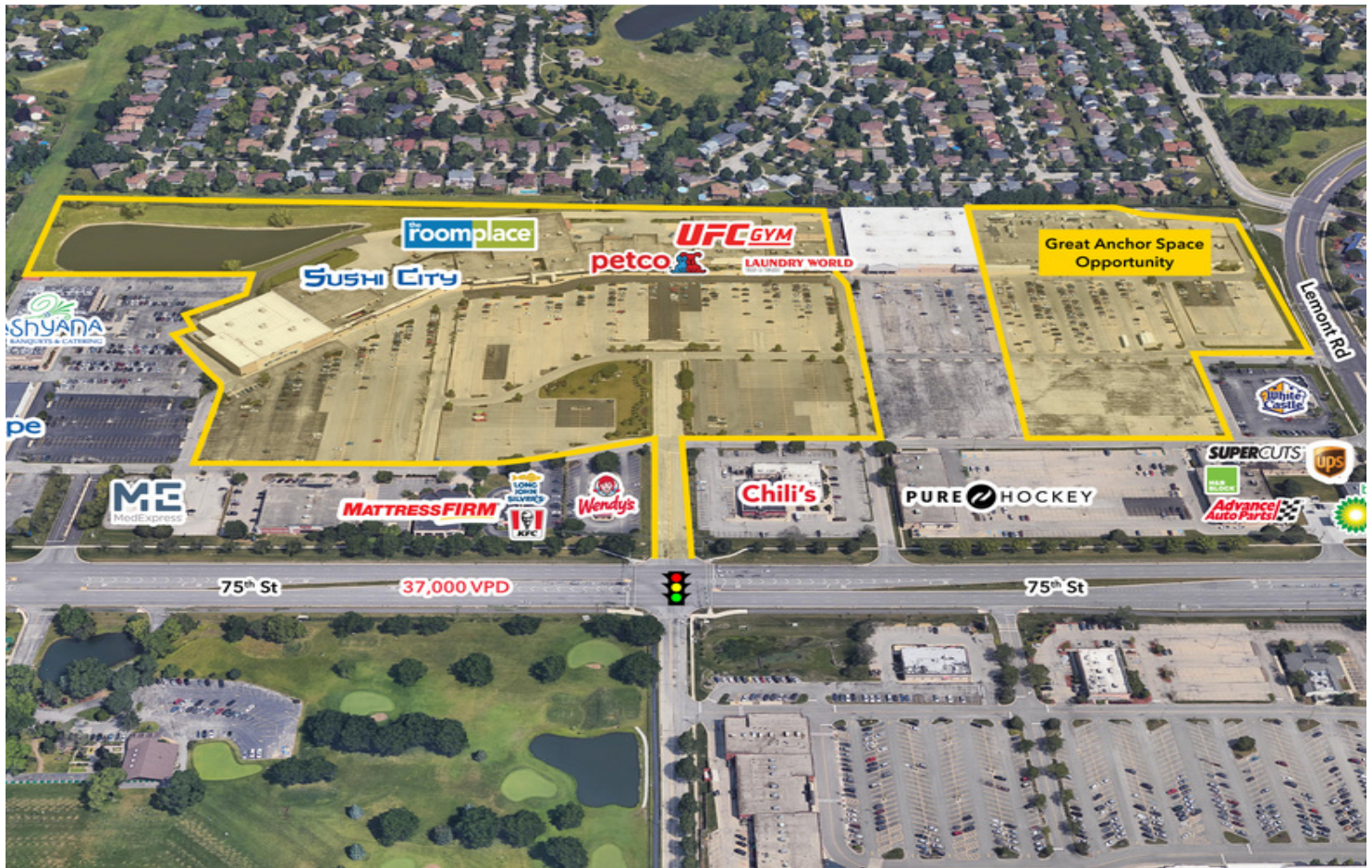


The Grove

1200-1620 W. 75th Street | Downers Grove, IL 60516

For Lease

Retail Space



- ▶ 1,200 - 76,307 SF available at recently renovated shopping center
- ▶ Located at the northwest corner of 75th & Lemont
- ▶ Affluent trade area with numerous national retail tenants including Wal-Mart, Home Depot, HomeGoods, Best Buy, TJ Maxx and many many more
- ▶ Abundant parking available
- ▶ Excellent traffic counts
- ▶ Amazing demographics with a strong daytime population

DEMOGRAPHICS

	1 MILE	3 MILES	5 MILES
Population	12,778	107,520	234,761
Daytime Population	10,259	86,467	213,243
Households	5,040	42,391	91,326
Average HHI	\$113,351	\$112,652	\$119,680

DOUG RENNER

312.275.3137
doug.renner@baumrealty.com

MICHAEL MEKSTO

312.275.3103
mmeksto@baumrealty.com

MARK FREDERICKS

312.275.3109
mark@baumrealty.com



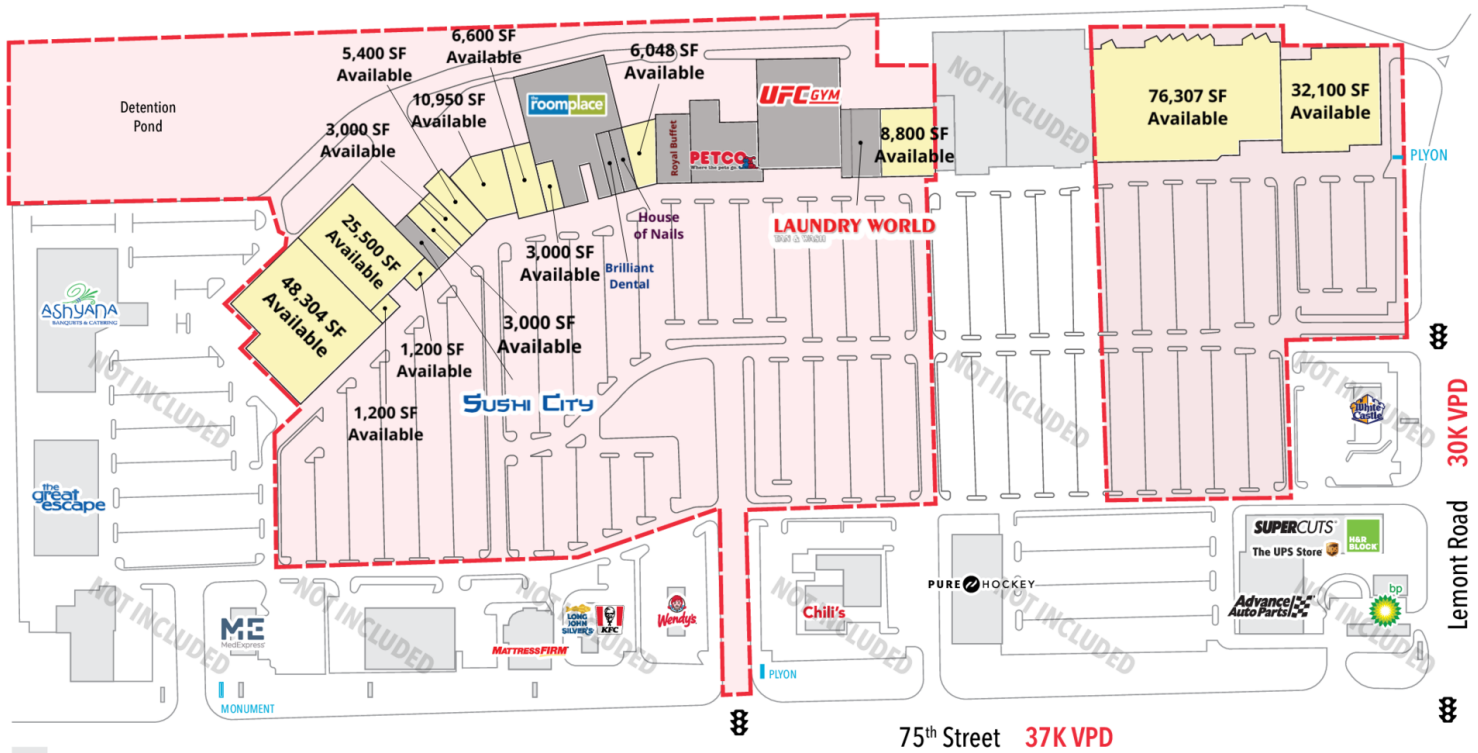
© 2020 All information supplied is from sources deemed reliable and is furnished subject to errors, omissions, modifications, removal of the listing from sale or lease, and to any listing conditions, including the rates and manner of payment of commissions for particular offerings, the terms of which are available to principals or duly licensed brokers. Any square footage dimensions set forth are approximate.

The Grove

1200-1620 W. 75th Street | Downers Grove, IL 60516

For Lease

Retail Space



DOUG RENNER
312.275.3137
doug.renner@baumrealty.com

MICHAEL MEKSTO
312.275.3103
mmeksto@baumrealty.com

MARK FREDERICKS
312.275.3109
mark@baumrealty.com



© 2020 All information supplied is from sources deemed reliable and is furnished subject to errors, omissions, modifications, removal of the listing from sale or lease, and to any listing conditions, including the rates and manner of payment of commissions for particular offerings, the terms of which are available to principals or duly licensed brokers. Any square footage dimensions set forth are approximate.

The Grove
 1200-1620 W 75th St
 Downers Grove, IL 60516-4235



Google

Map data ©2021 Imagery ©2021, Landsat / Copernicus, Maxar Technologies, Sanborn, U.S. Geological Survey, USDA Farm Service Agency



© 2020 All information supplied is from sources deemed reliable and is furnished subject to errors, omissions, modifications, removal of the listing from sale or lease, and to any listing conditions, including the rates and manner of payment of commissions for particular offerings, the terms of which are available to principals or duly licensed brokers. Any square footage dimensions set forth are approximate.

