

For Sale

Redevelopment Opportunity

950 Ogden Avenue

Downers Grove, IL 60515



- ±3,000 SF building on ±11,700 SF land available at the northeast corner of Ogden Avenue and Highland Avenue
- Redevelopment opportunity
- Great signage potential available on Ogden Avenue
- Area tenants include Walgreens, Jewel-Osco, NAPA Auto Parts, Chipotle, Starbucks and more

DEMOGRAPHIC SUMMARY

| | RADIUS | | |
|------------------------|-----------|-----------|-----------|
| | 1 MILE | 3 MILES | 5 MILES |
| AVERAGE HHI | \$131,026 | \$114,887 | \$115,626 |
| DAYTIME POPULATION | 13,158 | 128,921 | 328,674 |
| RESIDENTIAL POPULATION | 13,383 | 89,074 | 262,925 |

TRAFFIC COUNTS

| | |
|--------------|------------|
| OGDEN AVENUE | 30,900 VPD |
|--------------|------------|

Doug Renner
312.275.3137
doug.renner@baumrealty.com

Mark Fredericks
312.275.3109
mark@baumrealty.com

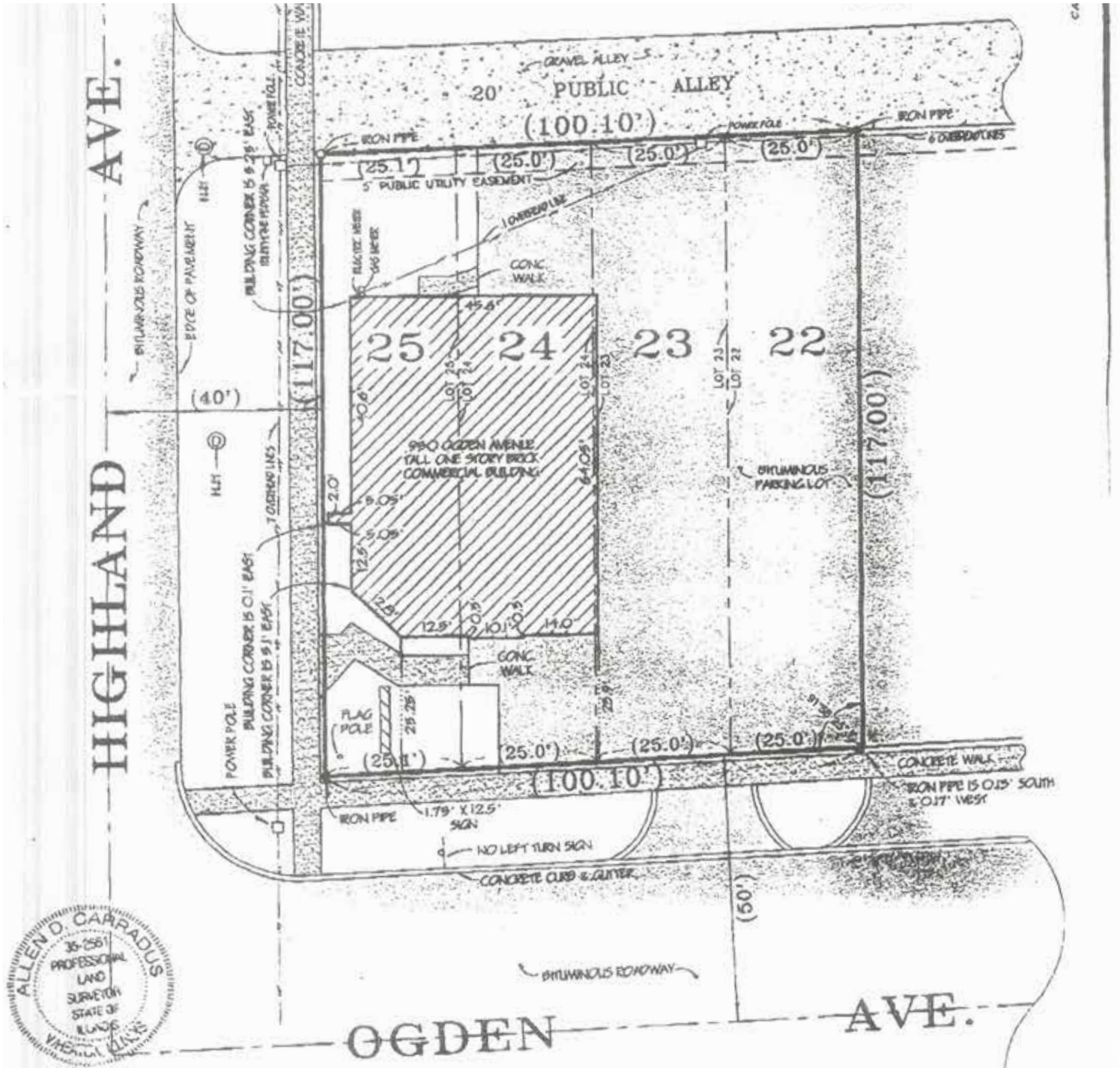


For Sale

Redevelopment Opportunity

950 Ogden Avenue

Downers Grove, IL 60515



Doug Renner
 312.275.3137
 doug.renner@baumrealty.com

Mark Fredericks
 312.275.3109
 mark@baumrealty.com



