

Uptown 500

500 W. Dundee Road | Wheeling, IL 60090

For Lease

Retail Property



- ▶ ±12,000 SF of new construction retail space
- ▶ Great retail space located at the base of a brand new 320 unit luxury apartment building
- ▶ Across the street from Wheeling Town Center, a brand new mixed development consisting of 100,000 square feet of commercial space and 301 apartments
- ▶ Located at the northwest corner of Dundee Road and Northgate Parkway (31,000 combined VPD)
- ▶ Walking distance to the Wheeling Metra Train Station

DEMOGRAPHICS

	1 MILE	3 MILES	5 MILES
Estimated Population	15,616	98,128	263,846
Adj. Daytime Demographics	15,090	106,918	334,688
Estimated Households	5,366	38,293	101,705
Estimated Average Household Income	\$83,388	\$111,799	\$129,511

MARK FREDERICKS
312.275.3109
mark@baumrealty.com

DOUG RENNER
312.275.3137
doug.renner@baumrealty.com



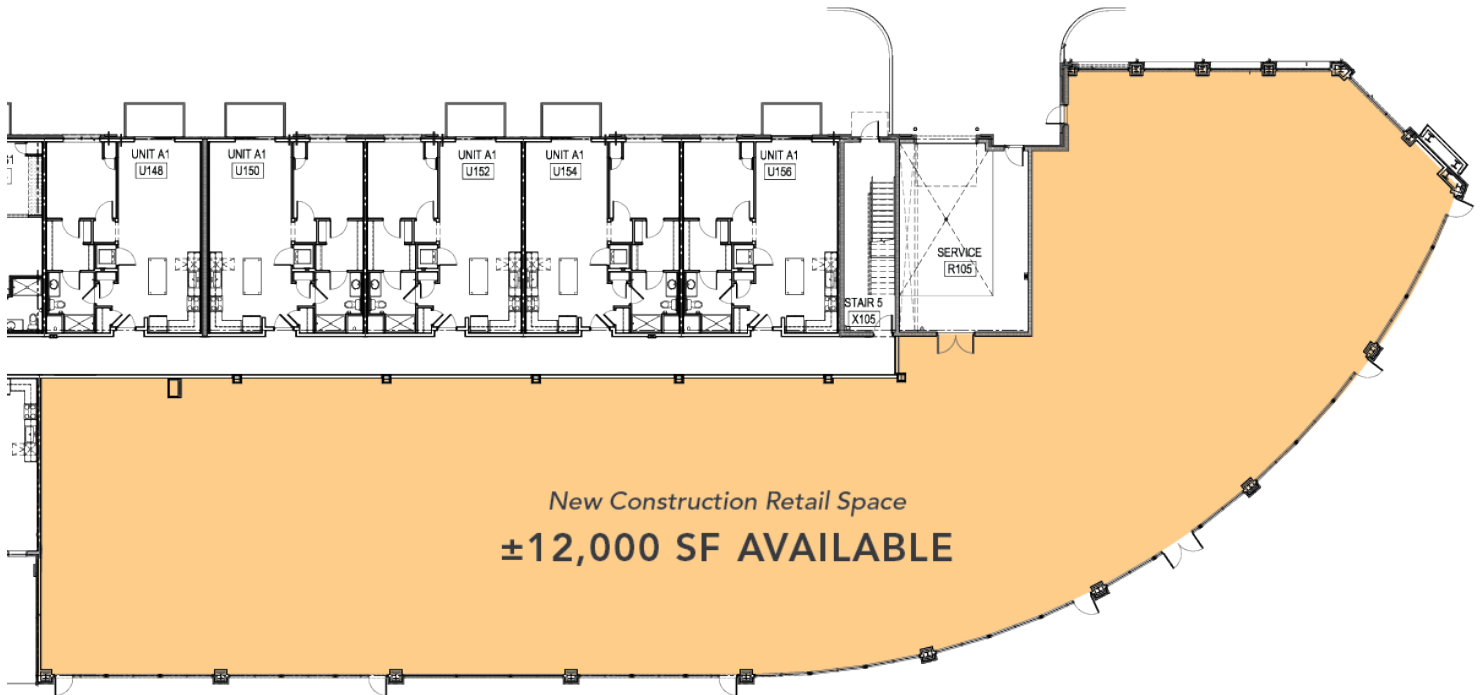
© 2020 All information supplied is from sources deemed reliable and is furnished subject to errors, omissions, modifications, removal of the listing from sale or lease, and to any listing conditions, including the rates and manner of payment of commissions for particular offerings, the terms of which are available to principals or duly licensed brokers. Any square footage dimensions set forth are approximate.

Uptown 500

500 W. Dundee Road | Wheeling, IL 60090

For Lease

Retail Property



W. Dundee Road

MARK FREDERICKS

312.275.3109
mark@baumrealty.com

DOUG RENNER

312.275.3137
doug.renner@baumrealty.com



© 2020 All information supplied is from sources deemed reliable and is furnished subject to errors, omissions, modifications, removal of the listing from sale or lease, and to any listing conditions, including the rates and manner of payment of commissions for particular offerings, the terms of which are available to principals or duly licensed brokers. Any square footage dimensions set forth are approximate.

