

For Lease

Retail Space

4621 N. Lincoln Avenue

Chicago, IL 60625 | Lincoln Square



- Up to ±4,600 SF of available space on the corner of Lincoln Avenue & Eastwood Avenue in Lincoln Square
- Area retailers include Starbucks, Lincoln Square Athletic Club, Chase, Potbelly and Marbles: The Brain Store
- Lincoln Square is a tapestry of interwoven cultures and one-of-a-kind businesses coming together to make an unforgettable place to shop, eat and visit
- The neighborhood is complete with rich public art, gourmet restaurants, European-style cafés, delis and specialty stores, sharing in a great mix of independent and nationally known retailers

- Right around the corner from the Western Brown line CTA stop
- Across the street from Davis Theater

DEMOGRAPHIC SUMMARY

	RADIUS		
	0.25 MILE	0.5 MILE	1 MILE
AVERAGE HHI	\$117,449	\$110,667	\$103,756
DAYTIME POPULATION	2,419	8,231	35,076
RESIDENTIAL POPULATION	3,694	14,960	59,130

TRAFFIC COUNTS

N. LINCOLN AVENUE	11,300 VPD
-------------------	------------

Doug Renner
312.275.3137
doug.renner@baumrealty.com

Trevor Jack
312.275.3128
trevor@baumrealty.com

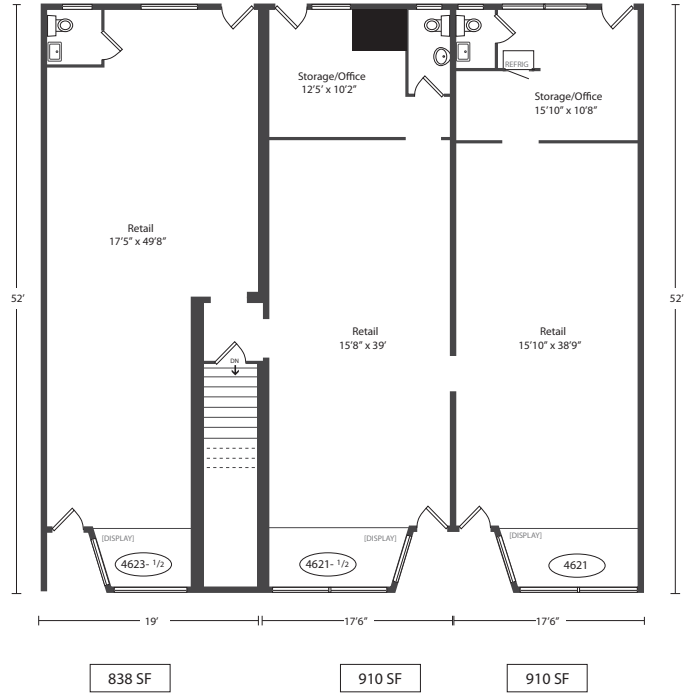
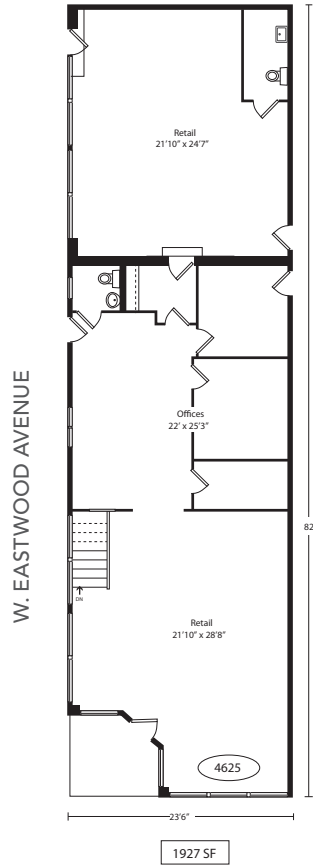


For Lease

Retail Space

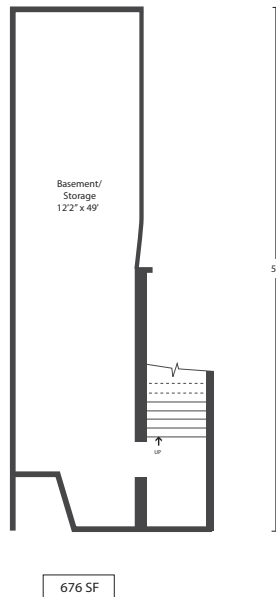
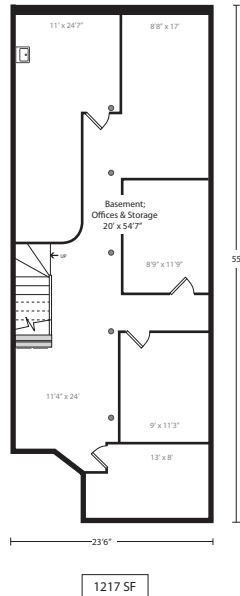
4621 N. Lincoln Avenue

Chicago, IL 60625 | Lincoln Square



STREET LEVEL PLANS

N. LINCOLN AVENUE



BASEMENT PLANS

NOT TO SCALE

Doug Renner
312.275.3137
doug.renner@baumrealty.com

Trevor Jack
312.275.3128
trevor@baumrealty.com



