

3539 W. 26th Street

Chicago, IL 60623 | Little Village

For Lease

Retail Property



- ▶ 2nd floor space available - ±9,000 SF (divisible)
- ▶ Over 72' of brand new windowline with frontage facing 26th Street
- ▶ Existing bathrooms in place
- ▶ No columns provide for many, easy tenant layouts
- ▶ Situated along a heavily trafficked street in a dense trade area
- ▶ Located above a new Dollar Tree store

DEMOGRAPHICS

	.25 MILE	.5 MILE	1 MILE
Estimated Population	7,184	26,695	77,758
Adj. Daytime Demographics	5,215	19,205	55,973
Estimated Households	1,898	6,887	18,519
Estimated Average Household Income	\$44,258	\$48,983	\$46,324

DAN MOLNAR
 312.275.3138
 dan@baumrealty.com

TREVOR JACK
 312.275.3128
 trevor@baumrealty.com



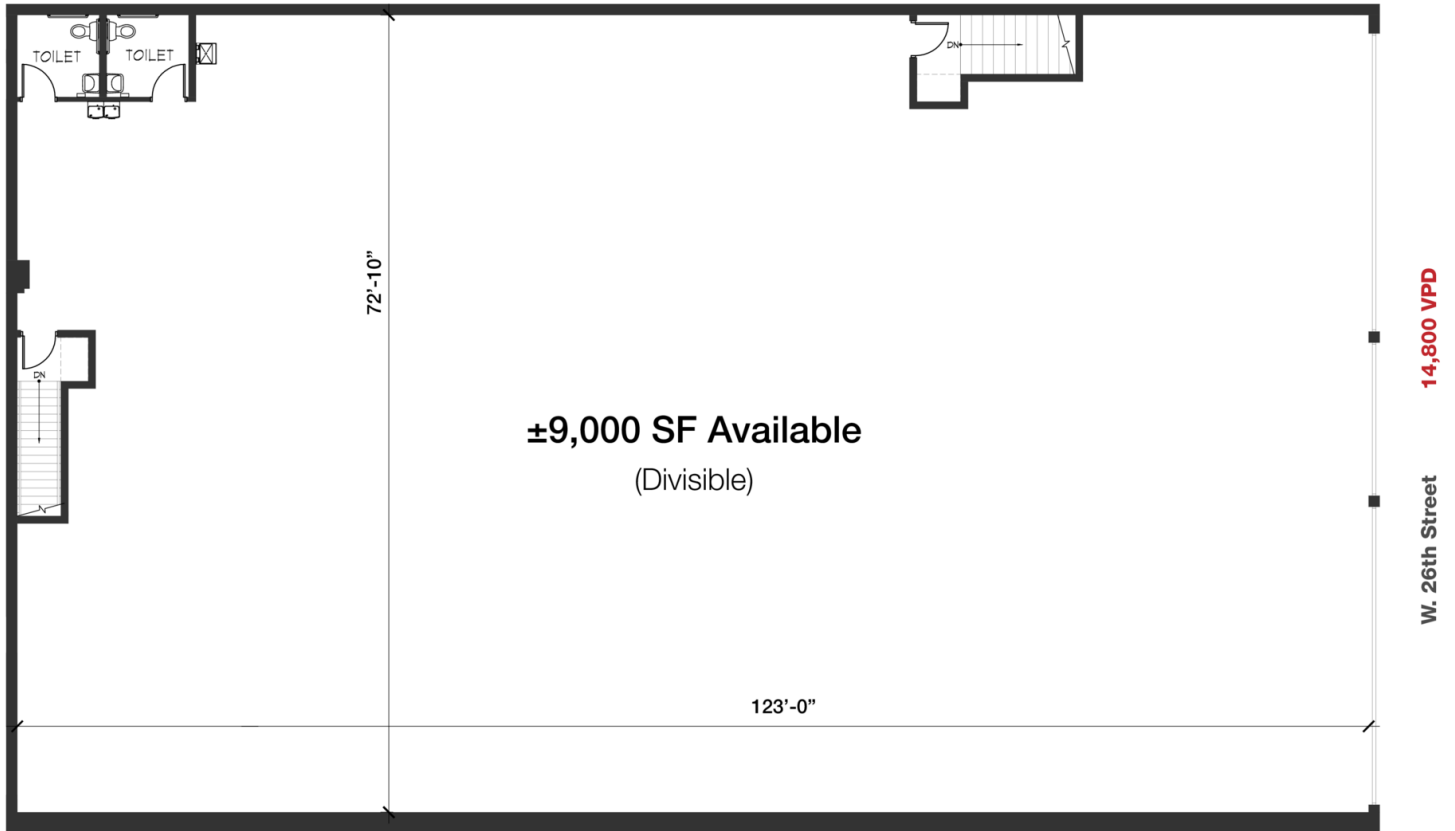
© 2018 All information supplied is from sources deemed reliable and is furnished subject to errors, omissions, modifications, removal of the listing from sale or lease, and to any listing conditions, including the rates and manner of payment of commissions for particular offerings, the terms of which are available to principals or duly licensed brokers. Any square footage dimensions set forth are approximate.

3539 W. 26th Street

Chicago, IL 60623 | Little Village

For Lease

Retail Property



DAN MOLNAR
312.275.3138
dan@baumrealty.com

TREVOR JACK
312.275.3128
trevor@baumrealty.com



© 2018 All information supplied is from sources deemed reliable and is furnished subject to errors, omissions, modifications, removal of the listing from sale or lease, and to any listing conditions, including the rates and manner of payment of commissions for particular offerings, the terms of which are available to principals or duly licensed brokers. Any square footage dimensions set forth are approximate.

3539 W. 26th Street
Chicago, IL 60623



Map data ©2019 Google Imagery ©2019 , Landsat / Copernicus, Maxar Technologies, Sanborn, U.S. Geological Survey, USDA Farm Service Agency



© 2018 All information supplied is from sources deemed reliable and is furnished subject to errors, omissions, modifications, removal of the listing from sale or lease, and to any listing conditions, including the rates and manner of payment of commissions for particular offerings, the terms of which are available to principals or duly licensed brokers. Any square footage dimensions set forth are approximate.

