

# For Lease or Sale

Retail Space

# 3539 W. 26th Street

Chicago, IL 60623 | Little Village



- Prime location with excellent visibility along 26th Street
- 18,115 SF of leasable building plus usable basement with  $\pm 76$  feet of frontage on 26th Street
- 1st floor retail space boasts  $\pm 10$ -13 foot ceiling heights
- 2nd floor is column free with  $\pm 12$  foot ceiling heights
- B3-2 Zoning with permitted uses including retail, office, day cares, restaurants, entertainments venue, among many others

## DEMOGRAPHIC SUMMARY

	RADIUS		
	.25 MILE	.5 MILE	1 MILE
AVERAGE HHI	\$38,033	\$41,305	\$40,549
DAYTIME POPULATION	2,922	11,499	50,559
RESIDENTIAL POPULATION	7,034	27,619	80,922

## TRAFFIC COUNTS

W. 26TH STREET	14,800 VPD
----------------	------------

Dan Molnar  
312.275.3138  
dan@baumrealty.com

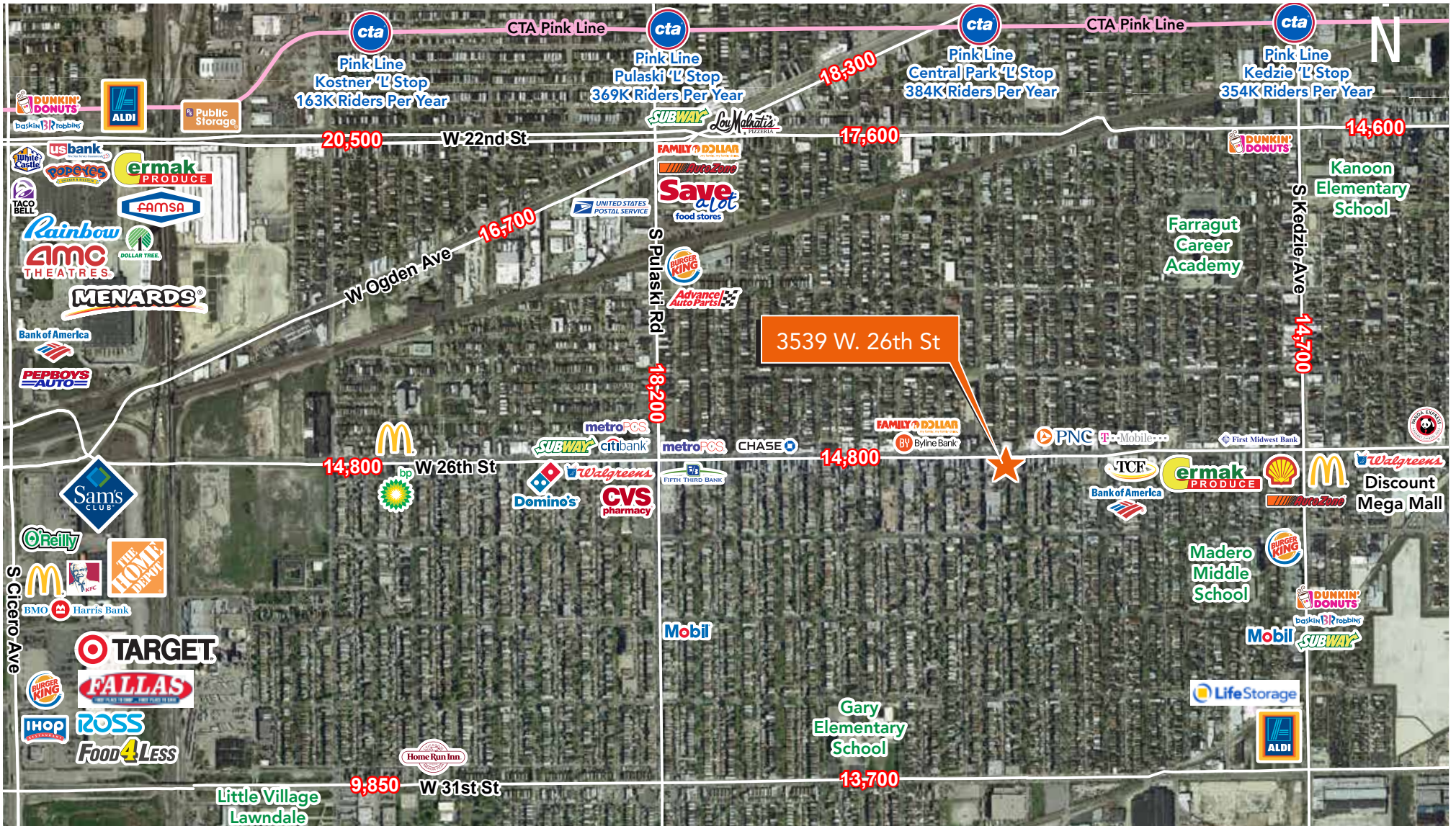
Michael Sieber  
312.275.3127  
michael.sieber@baumrealty.com





# 3539 W. 26th Street

Chicago, IL 60623 | Little Village



Dan Molnar  
312.275.3138  
dan@baumrealty.com

Michael Sieber  
312.275.3127  
michael.sieber@baumrealty.com



# 3539 W. 26th Street

Chicago, IL 60623 | Little Village

## DEMOGRAPHIC SUMMARY

2000-2010 Census, 2016 Estimates with 2021 Projections

	.25 Mile	.5 Mile	1 Mile	
<b>POPULATION</b>	2016 Estimated Population	7,034	27,619	80,922
	2021 Projected Population	7,142	28,052	81,927
	2010 Census Population	6,992	27,566	78,552
	2000 Census Population	8,460	32,533	89,892
	Projected Annual Growth 2016 to 2021	0.3%	0.3%	0.2%
	Historical Annual Growth 2000 to 2016	-1.1%	-0.9%	-0.6%
2016 Median Age	29.7	29.3	30	
<b>HOUSEHOLDS</b>	2016 Estimated Households	1,887	7,291	19,856
	2021 Projected Households	1,975	7,640	20,777
	2010 Census Households	1,824	7,070	18,533
	2000 Census Households	2,004	7,581	19,779
	Projected Annual Growth 2016 to 2021	0.9%	1.0%	0.9%
	Historical Annual Growth 2000 to 2016	-0.4%	-0.2%	-
<b>POPULATION BY RACE</b>	2016 Estimated White	43.7%	44.9%	39.0%
	2016 Estimated Black or African American	1.9%	4.2%	24.3%
	2016 Estimated Asian or Pacific Islander	0.4%	0.9%	0.8%
	2016 Estimated American Indian or Native Alaskan	1.2%	1.4%	1.0%
	2016 Estimated Other Races	52.8%	48.7%	34.9%
	2016 Estimated Hispanic	92.6%	89.7%	67.8%
<b>INCOME</b>	2016 Estimated Average Household Income	\$38,033	\$41,305	\$40,549
	2016 Estimated Median Household Income	\$31,912	\$34,120	\$33,113
	2016 Estimated Per Capita Income	\$10,214	\$10,930	\$11,742
<b>EDUCATION (AGE 25+)</b>	2016 Estimated Elementary (Grade Level 0 to 8)	29.5%	31.1%	25.7%
	2016 Estimated Some High School (Grade Level 9 to 11)	18.0%	15.7%	18.4%
	2016 Estimated High School Graduate	28.4%	26.6%	27.7%
	2016 Estimated Some College	10.7%	11.5%	13.2%
	2016 Estimated Associates Degree Only	3.7%	4.6%	4.2%
	2016 Estimated Bachelors Degree Only	7.0%	7.2%	7.1%
2016 Estimated Graduate Degree	2.7%	3.4%	3.6%	
<b>BUSINESS</b>	2016 Estimated Total Businesses	161	479	1,394
	2016 Estimated Total Employees	785	2,904	17,560
	2016 Estimated Employee Population per Business	4.9	6.1	12.6
	2016 Estimated Residential Population per Business	43.8	57.6	58.0

This report was produced using data from private and government sources deemed to be reliable. The information herein is provided without representation or warranty.

