

2839 N. Milwaukee Avenue

CHICAGO, IL 60618 | LOGAN SQUARE

For Sale

RETAIL / MIXED-USE / REDEVELOPMENT PROPERTY



BUILDING INFORMATION

ASKING PRICE:	\$1,150,000
BUILDING SIZE:	11,700 SF
LOT SIZE:	50' x 125'
ZONING:	B2-2

SITE HIGHLIGHTS

- ▶ Highly visible corner building on Milwaukee Avenue in Logan Square
- ▶ Current zoning allows for "as of right" development of 6 residential units and ground floor commercial
- ▶ Transit oriented location – seller previously obtained parking variance to allow for no parking with 6 unit + commercial development plan
- ▶ Attractive owner / user opportunity with abundant windows and signage potential
- ▶ Functional lower level provides additional $\pm 5,000$ SF of usable building area

OWEN WIESNER

owen@baumrealty.com
312.275.3119

ARI TOPPER, CFA

ari@baumrealty.com
312.275.3113

TYLER DECHTER

tyler@baumrealty.com
312.275.3132



© 2021 All information supplied is from sources deemed reliable and is furnished subject to errors, omissions, modifications, removal of the listing from sale or lease, and to any listing conditions, including the rates and manner of payment of commissions for particular offerings, the terms of which are available to principals or duly licensed brokers. Any square footage dimensions set forth are approximate.

BAUM REALTY GROUP, LLC · 1030 W. CHICAGO AVENUE, SUITE 200 · CHICAGO, IL 60642 · 312.666.3000 · WWW.BAUMREALTY.COM

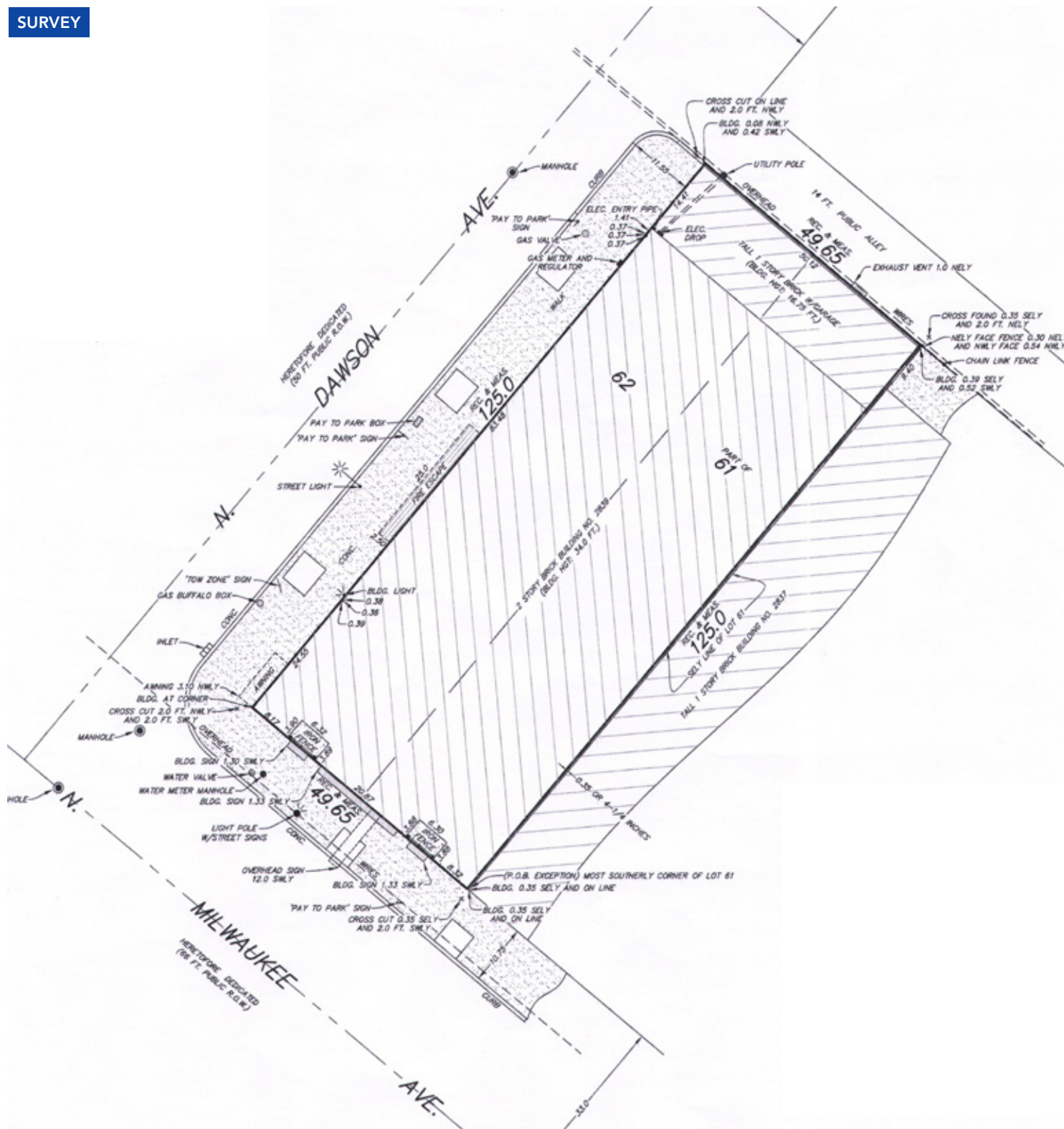
2839 N. Milwaukee Avenue

CHICAGO, IL 60618 | LOGAN SQUARE

For Sale

RETAIL / MIXED-USE / REDEVELOPMENT PROPERTY

SURVEY



OWEN WIESNER
owen@baumrealty.com
312.275.3119

ARI TOPPER, CFA
ari@baumrealty.com
312.275.3113

TYLER DECHTER
tyler@baumrealty.com
312.275.3132



© 2021 All information supplied is from sources deemed reliable and is furnished subject to errors, omissions, modifications, removal of the listing from sale or lease, and to any listing conditions, including the rates and manner of payment of commissions for particular offerings, the terms of which are available to principals or duly licensed brokers. Any square footage dimensions set forth are approximate.

Logan Square
 2839 N. Milwaukee Avenue
 Chicago, IL

