

2839 N. Milwaukee Avenue

Chicago, IL 60618 | Logan Square

For Sale Or Lease

Retail / Mixed Use / Redevelopment Property



- ▶ ±6,200 to ±11,700 SF available
- ▶ Highly visible corner building on Milwaukee Avenue in Logan Square
- ▶ B2-2 zoning
- ▶ 50' x 125' lot size
- ▶ Highly visible neighborhood location with abundant windows and signage potential
- ▶ Functional lower level provides additional ±5,000 SF of usable building area
- ▶ Loading dock in rear of the building provides utility to retail user or could be demolished to create parking

ASKING PRICE: \$1,695,000

LEASE RATE: \$20/SF NNN

DEMOGRAPHICS

	.25 MILE	.5 MILE	1 MILE
Estimated Population	6,407	23,866	72,875
Adj. Daytime Demographics	4,112	13,788	48,002
Estimated Households	2,371	8,865	26,836
Estimated Average Household Income	\$68,780	\$68,244	\$72,706

ARI TOPPER
312.275.3113
ari@baumrealty.com

MARK FREDERICKS
312.275.3109
mark@baumrealty.com

TYLER DECHTER
312.275.3132
tyler@baumrealty.com



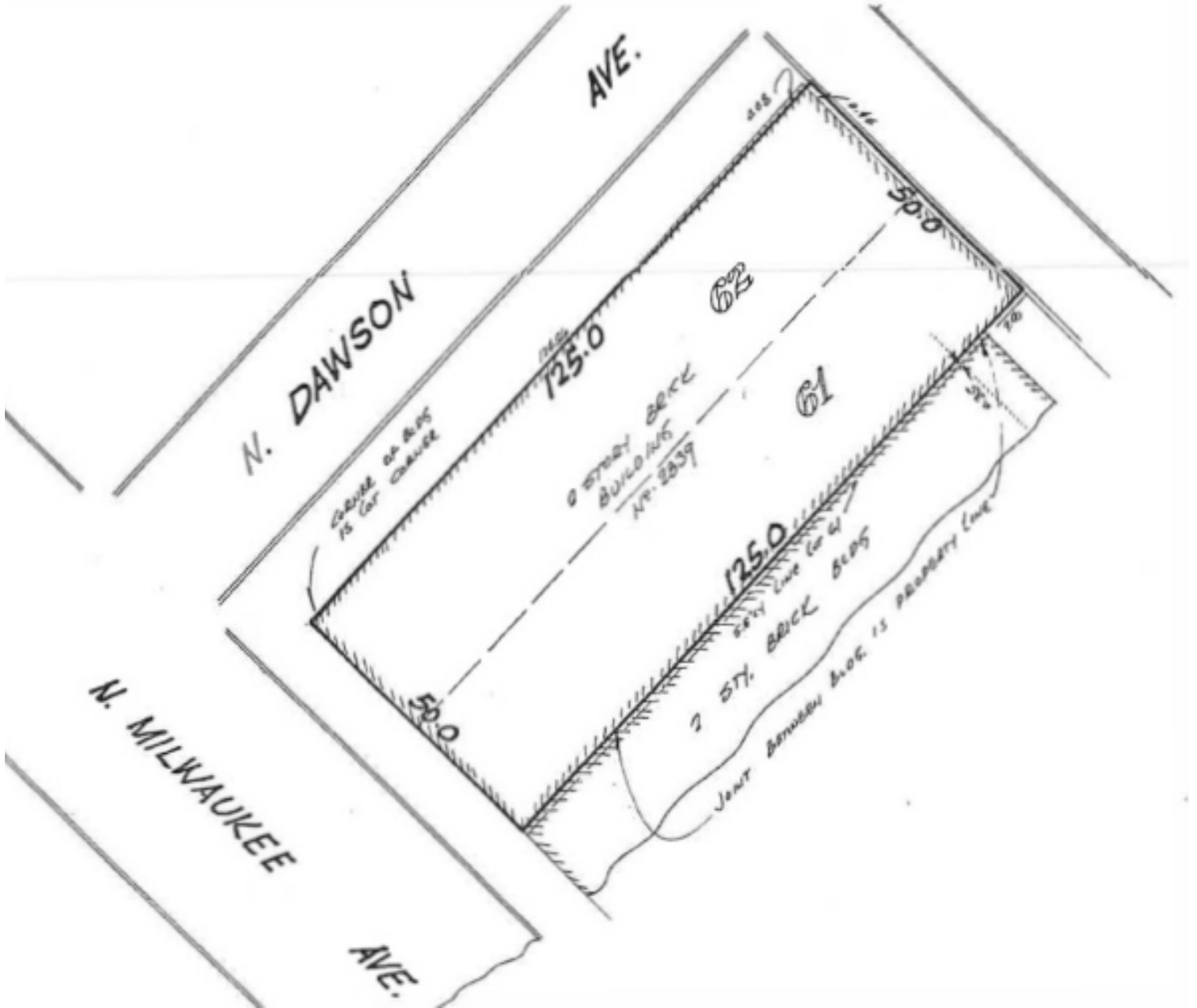
© 2019 All information supplied is from sources deemed reliable and is furnished subject to errors, omissions, modifications, removal of the listing from sale or lease, and to any listing conditions, including the rates and manner of payment of commissions for particular offerings, the terms of which are available to principals or duly licensed brokers. Any square footage dimensions set forth are approximate.

2839 N. Milwaukee Avenue

Chicago, IL 60618 | Logan Square

For Sale Or Lease

Retail / Mixed Use / Redevelopment Property



2839 N. Milwaukee Avenue Survey

ARI TOPPER

312.275.3113
ari@baumrealty.com

MARK FREDERICKS

312.275.3109
mark@baumrealty.com

TYLER DECHTER

312.275.3132
tyler@baumrealty.com



© 2019 All information supplied is from sources deemed reliable and is furnished subject to errors, omissions, modifications, removal of the listing from sale or lease, and to any listing conditions, including the rates and manner of payment of commissions for particular offerings, the terms of which are available to principals or duly licensed brokers. Any square footage dimensions set forth are approximate.

2839 N. Milwaukee Avenue
Chicago, IL 60618

Giordano's GameStop T-Mobile BMO Harris Bank

2839 N. Milwaukee Ave

Dante's Pizzeria

Crown Liquors

Bank of America

at&t

Friendship

Hairpin Arts Center

Buzz Coffee
Dial M for Modern
Boulevard Bikes

DUNKIN'

FoodSmart
URBAN MARKET
Organic - Vegan - Specialty Foods

Foot Locker

GAP

Hopewell
Brewing
Company

the DILL
PICKLE
FOOD CO-OP

Gorilla Sushi

The Walk In

SABA

McDonald's

Fleur

W Schubert Ave

W Schubert Ave

W Schubert

Cafe Con Leche

CHASE

The Old Plank

Logan Square

Shop 1021

The Logan Theatre

INTELLIGENTIA

Google

Map data ©2019 Imagery ©2019, Maxar Technologies, Sanborn, U.S. Geological Survey, USDA Farm Service Agency

BAUM
REALTY GROUP

© 2019 All information supplied is from sources deemed reliable and is furnished subject to errors, omissions, modifications, removal of the listing from sale or lease, and to any listing conditions, including the rates and manner of payment of commissions for particular offerings, the terms of which are available to principals or duly licensed brokers. Any square footage dimensions set forth are approximate.

