

For Lease

Retail Space

2501 W. Armitage Avenue

Chicago, IL 60647 | MODE Logan Square



- 6,600 SF available on the corner of Campbell Avenue & Armitage Avenue - black iron capable
- 3,125 SF small shop space available on Armitage Avenue
- Located at the base of the new MODE Logan Square mixed-use development
- 173 total feet of frontage along Armitage Avenue
- Covered parking available
- 3 minute walk to the CTA Western Blue Line 'L' station (1.9M riders in 2016)
- Western Avenue access point to The 606, Chicago's first elevated walking and biking trail, is just south of the development

- 3 blocks to the Concord Music Hall and 5 blocks to the Congress Theater (currently undergoing a massive renovation and residential conversion)
- Area retail includes Ipsento, Margie's Candies, Irazu, 90 Miles Cuban Cafe, Wasbi, Madison Public House, Twisted Scissors Salon, Table Donkey & Stick, Katherine Anne Confections, Remedy, Walgreens and McDonald's

DEMOGRAPHIC SUMMARY

	RADIUS		
	.25 MILE	.5 MILE	1 MILE
AVERAGE HHI	\$93,227	\$102,212	\$100,427
DAYTIME POPULATION	2,475	8,847	32,780
RESIDENTIAL POPULATION	4,693	19,058	60,299

Doug Renner
312.275.3137
doug.renner@baumrealty.com

Trevor Jack
312.275.3128
trevor@baumrealty.com



For Lease

Retail Space

2501 W. Armitage Avenue

Chicago, IL 60647 | MODE Logan Square



Doug Renner
312.275.3137
doug.renner@baumrealty.com

Trevor Jack
312.275.3128
trevor@baumrealty.com



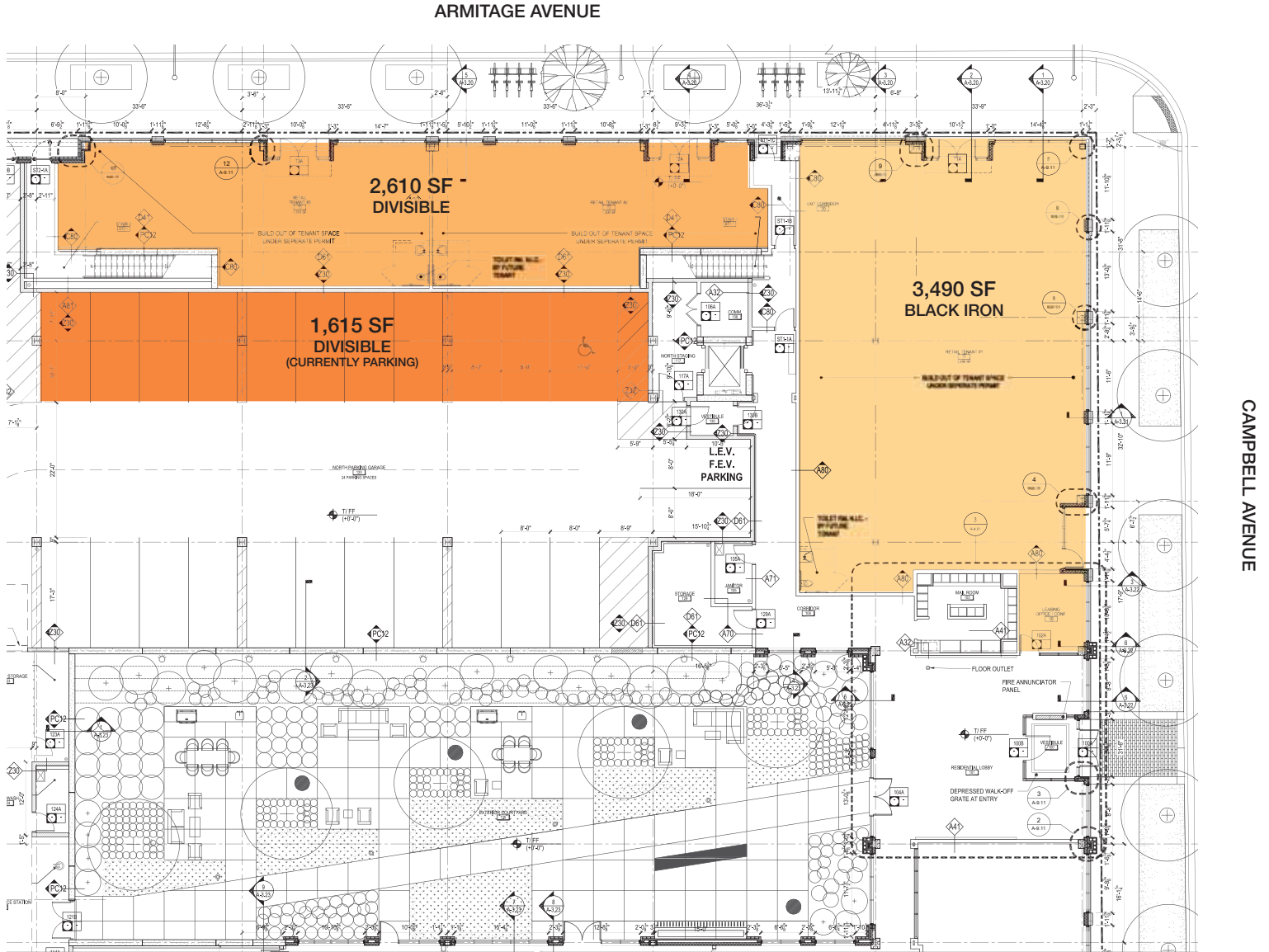
For Lease

Retail Space

2501 W. Armitage Avenue

Chicago, IL 60647 | MODE Logan Square

Demising Option Site Plan



Doug Renner
312.275.3137
doug.renner@baumrealty.com

Trevor Jack
312.275.3128
trevor@baumrealty.com



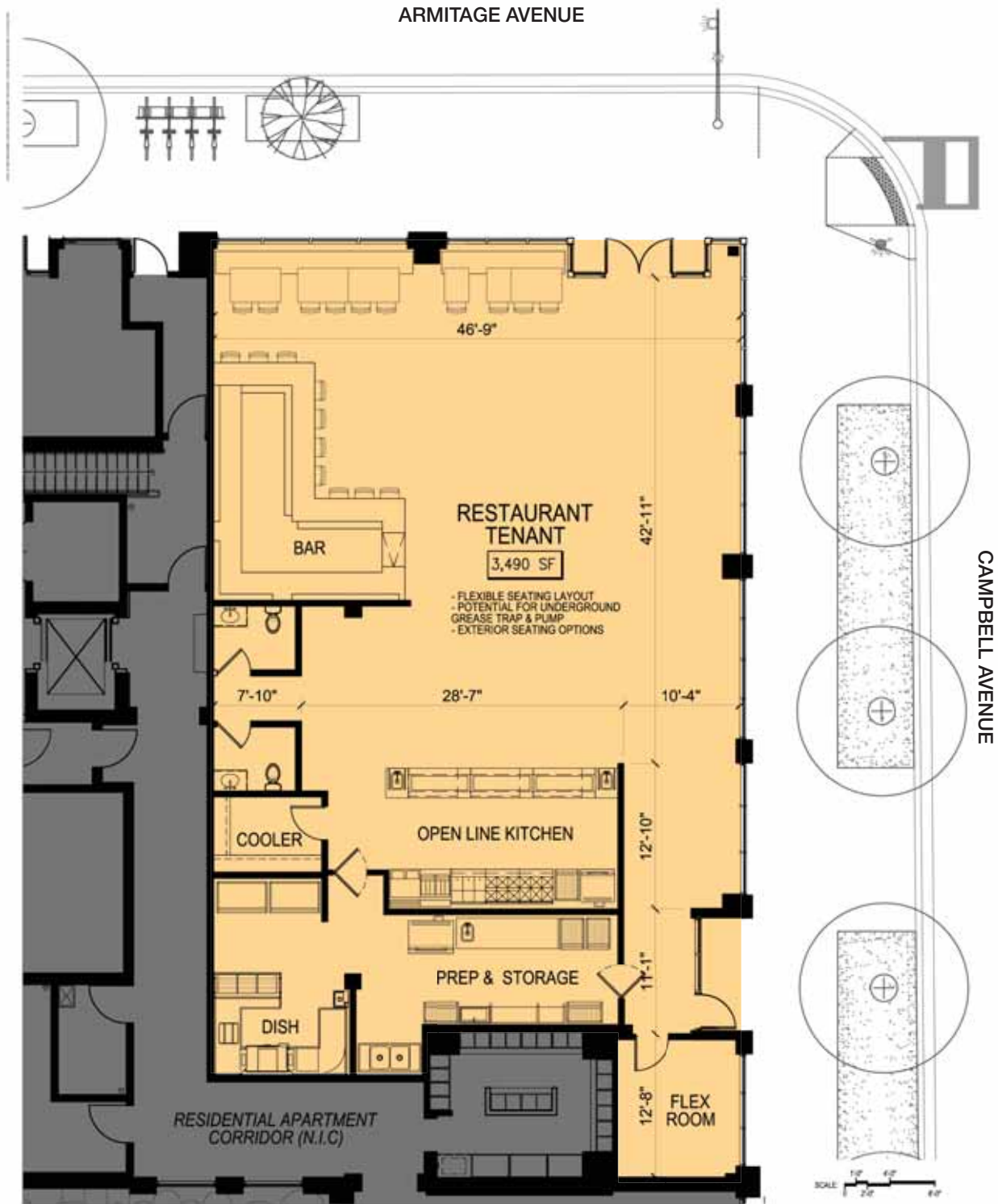
For Lease

Retail Space

2501 W. Armitage Avenue

Chicago, IL 60647 | MODE Logan Square

Restaurant Concept Site Plan



Doug Renner
312.275.3137
doug.renner@baumrealty.com

Trevor Jack
312.275.3128
trevor@baumrealty.com



