

For Lease

Retail Space | \$35 PSF NNN

2125 W. North Avenue

Chicago, IL 60647 | Wicker Park



- Up to ±14,782 SF available on 3 levels
 - 1st floor: ±8,292 SF
 - 2nd floor: ±3,245 SF
 - 3rd floor: ±3,245 SF
- Asking \$35 PSF NNN
- An additional full city lot next to the building allows for outdoor seating / open green space
- 20 parking spaces available
- Excellent branding opportunity with over 75 feet of frontage along North Avenue
- 2 blocks from the CTA Blue Line Damen 'L' station (2.2M riders in 2016) and The 606, Chicago's first elevated park and trail system

- Steps from the new boutique hotel, The Robey
- Wicker Park / Bucktown is one of the country's trendiest neighborhoods with a mix of national, local, and regional boutiques and shops as well as some of the hottest restaurants in Chicago
- Join TOMS, Urban Outfitters, Lululemon, Adidas, Nike, and Scotch & Soda

DEMOGRAPHIC SUMMARY

	RADIUS		
	.25 MILE	.5 MILE	1 MILE
AVERAGE HHI	\$126,742	\$140,218	\$116,347
DAYTIME POPULATION	3,947	12,094	38,273
RESIDENTIAL POPULATION	4,261	17,302	67,369

Doug Renner
312.275.3137
doug.renner@baumrealty.com

Trevor Jack
312.275.3128
trevor@baumrealty.com



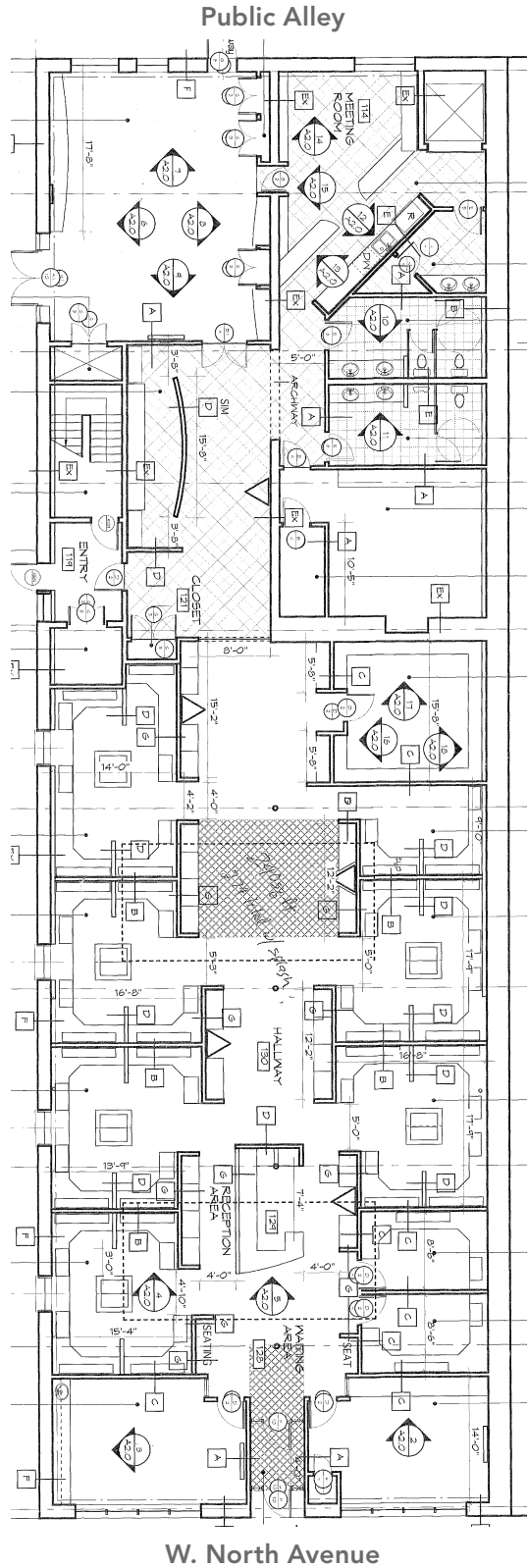
For Lease

Retail Space | \$35 PSF NNN

2125 W. North Avenue

Chicago, IL 60647 | Wicker Park

FIRST FLOOR



Doug Renner
312.275.3137
doug.renner@baumrealty.com

Trevor Jack
312.275.3128
trevor@baumrealty.com



For Lease

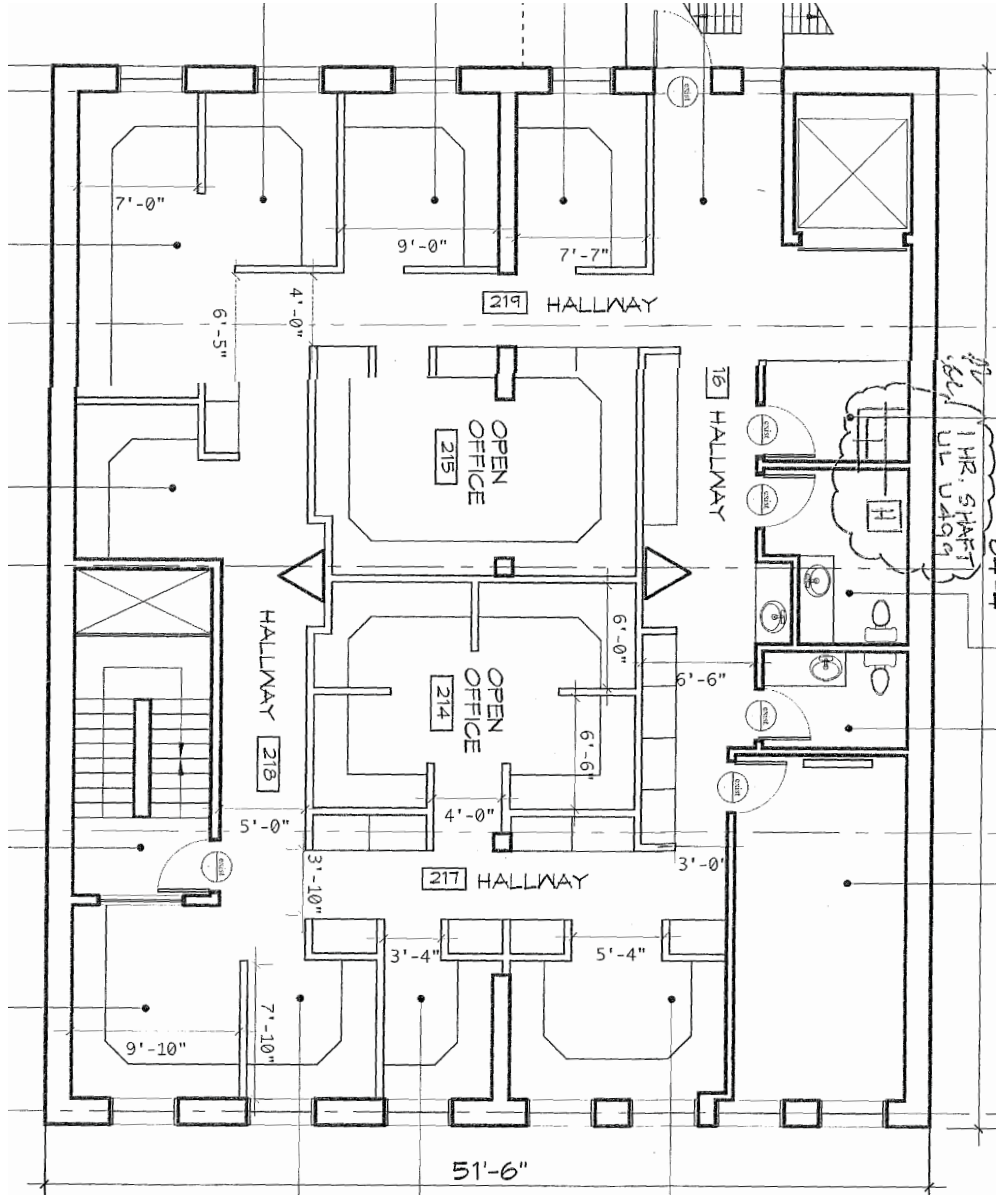
Retail Space | \$35 PSF NNN

2125 W. North Avenue

Chicago, IL 60647 | Wicker Park

Public Alley

SECOND FLOOR



Doug Renner
312.275.3137
doug.renner@baumrealty.com

Trevor Jack
312.275.3128
trevor@baumrealty.com



For Lease

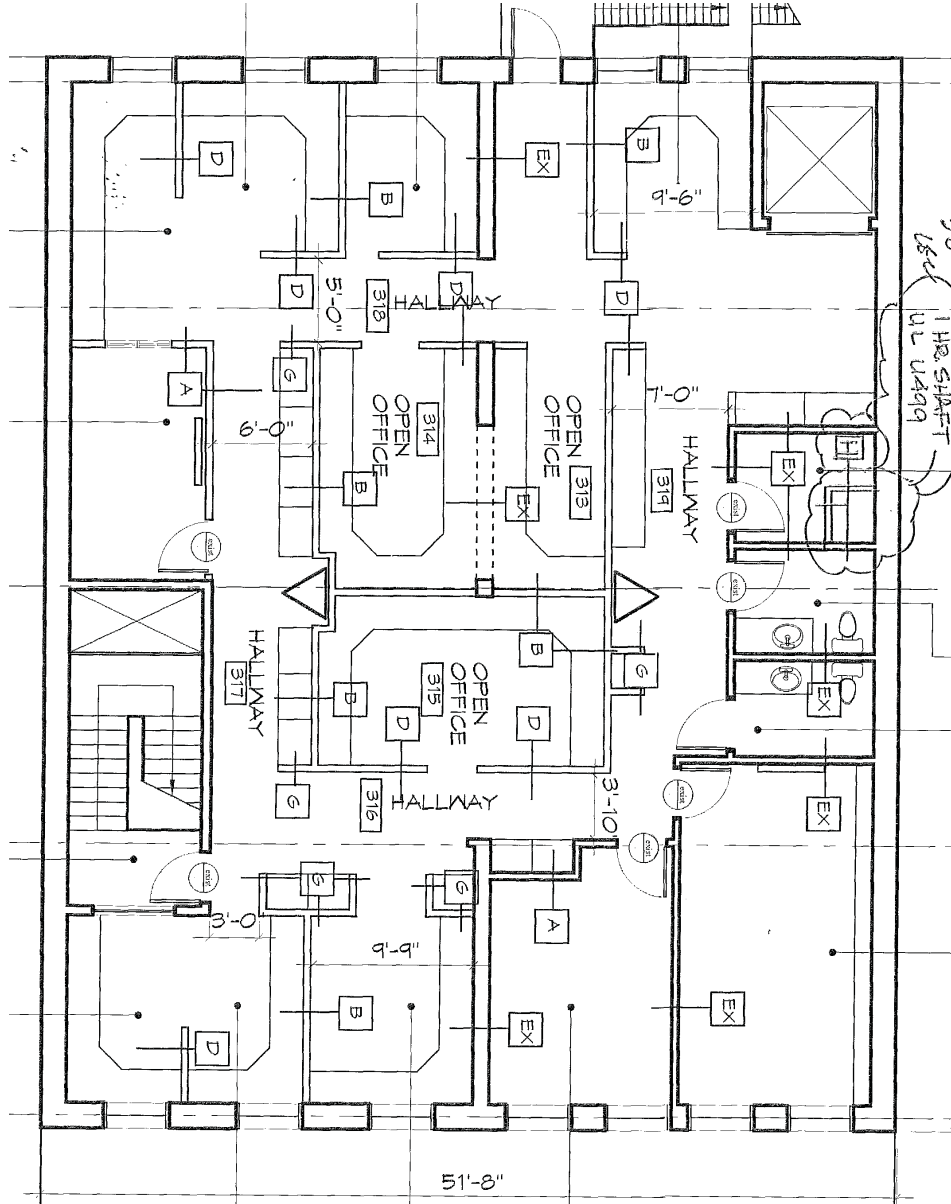
Retail Space | \$35 PSF NNN

2125 W. North Avenue

Chicago, IL 60647 | Wicker Park

Public Alley

THIRD FLOOR



Doug Renner
312.275.3137
doug.renner@baumrealty.com

Trevor Jack
312.275.3128
trevor@baumrealty.com



