

200 E. North Avenue

West Chicago, IL 60185 |

For Sale

Land



- ▶ 4 acres available just south of two heavily trafficked arterials: Route 64 & Route 59
- ▶ No Menards restrictions
- ▶ Off site detention
- ▶ East of Dupage County Airport
- ▶ Area retailers include Dunkin Donuts, Subway, McDonald's, Dollar Tree, Fifth Third Bank, Steak n' Shake and Hardee's

SALE PRICE:

\$960,000

DEMOGRAPHICS

	1 MILE	3 MILES	5 MILES
Estimated Population	6,749	43,135	143,271
Adj. Daytime Demographics	6,479	41,524	139,370
Estimated Households	2,094	13,165	46,937
Estimated Average Household Income	\$119,897	\$116,870	\$115,983

TREVOR JACK
312.275.3128
trevor@baumrealty.com

MARK FREDERICKS
312.275.3109
mark@baumrealty.com



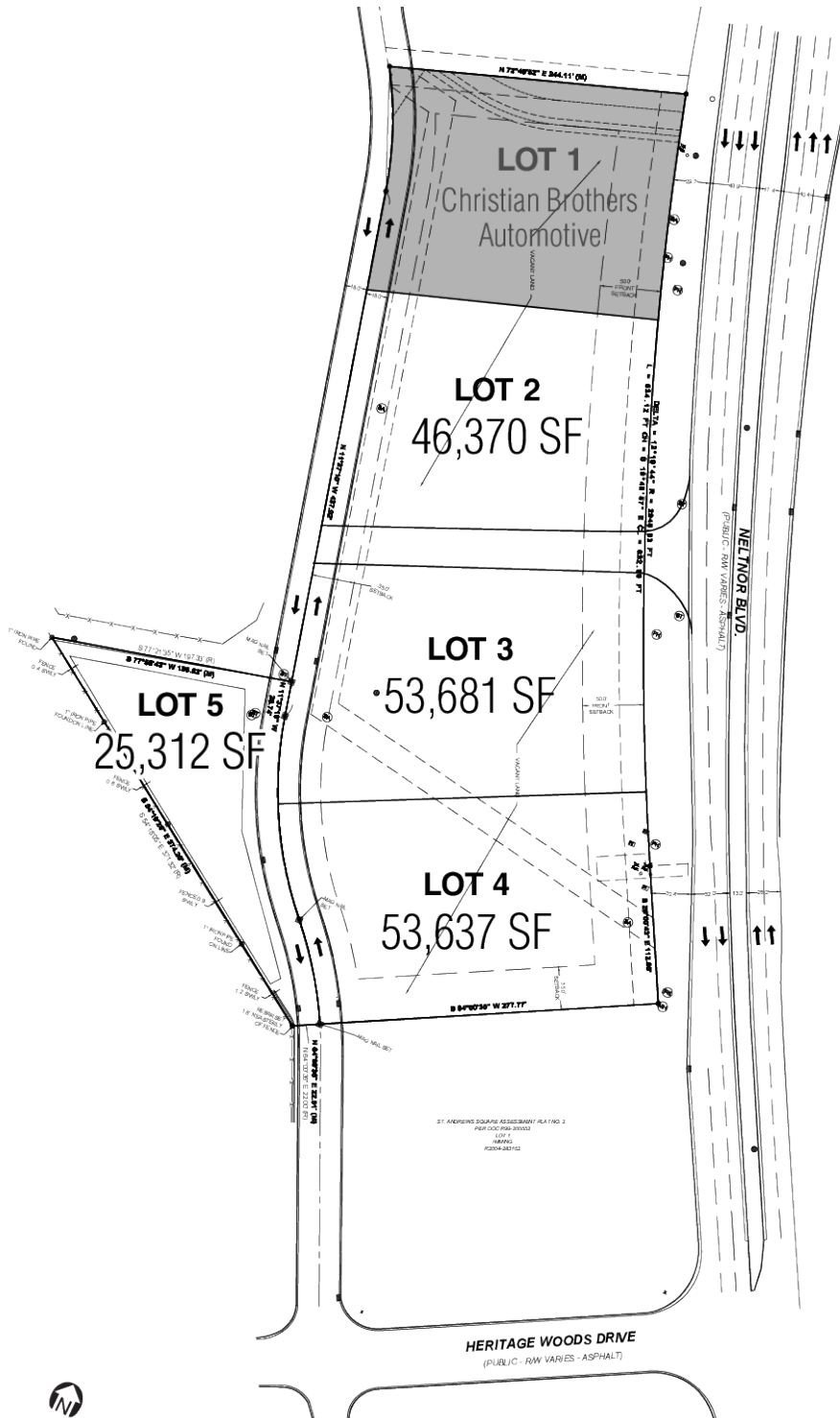
© 2018 All information supplied is from sources deemed reliable and is furnished subject to errors, omissions, modifications, removal of the listing from sale or lease, and to any listing conditions, including the rates and manner of payment of commissions for particular offerings, the terms of which are available to principals or duly licensed brokers. Any square footage dimensions set forth are approximate.

200 E. North Avenue

West Chicago, IL 60185 |

For Sale

Land



TREVOR JACK

312.275.3128

trevor@baumrealty.com

MARK FREDERICKS

312.275.3109

mark@baumrealty.com



© 2018 All information supplied is from sources deemed reliable and is furnished subject to errors, omissions, modifications, removal of the listing from sale or lease, and to any listing conditions, including the rates and manner of payment of commissions for particular offerings, the terms of which are available to principals or duly licensed brokers. Any square footage dimensions set forth are approximate.

200 E. North Avenue
West Chicago, IL 60185



Map data ©2018 Google Imagery ©2018 , DigitalGlobe, U.S. Geological Survey, USDA Farm Service Agency



© 2018 All information supplied is from sources deemed reliable and is furnished subject to errors, omissions, modifications, removal of the listing from sale or lease, and to any listing conditions, including the rates and manner of payment of commissions for particular offerings, the terms of which are available to principals or duly licensed brokers. Any square footage dimensions set forth are approximate.

