

For Lease or Sale

Retail Space

1500 E. Algonquin Road

Schaumburg, IL 60173



- Free standing fast food restaurant with drive-thru available for sale or lease
- Along busy Algonquin Road in Schaumburg
- In front of The Shoppes at Prime Village
- Close proximity to IL-90 and Woodfield Shopping Center
- Area tenants include Aldi, Culver's, Chicago Prime Steakhouse, Subway, The Wine Cellar and Woodfield shopping corridor
- **Reduced asking price: \$885,000**

DEMOGRAPHIC SUMMARY

	RADIUS		
	1 MILE	3 MILES	5 MILES
AVERAGE HHI	\$81,983	\$99,265	\$99,840
DAYTIME POPULATION	18,508	119,084	275,105
RESIDENTIAL POPULATION	10,763	81,584	282,399

TRAFFIC COUNTS

E. ALGONQUIN ROAD	38,000 VPD
N. MEACHAM ROAD	32,000 VPD

Doug Renner
312.275.3137
doug.renner@baumrealty.com

Mark Fredericks
312.275.3109
mark@baumrealty.com

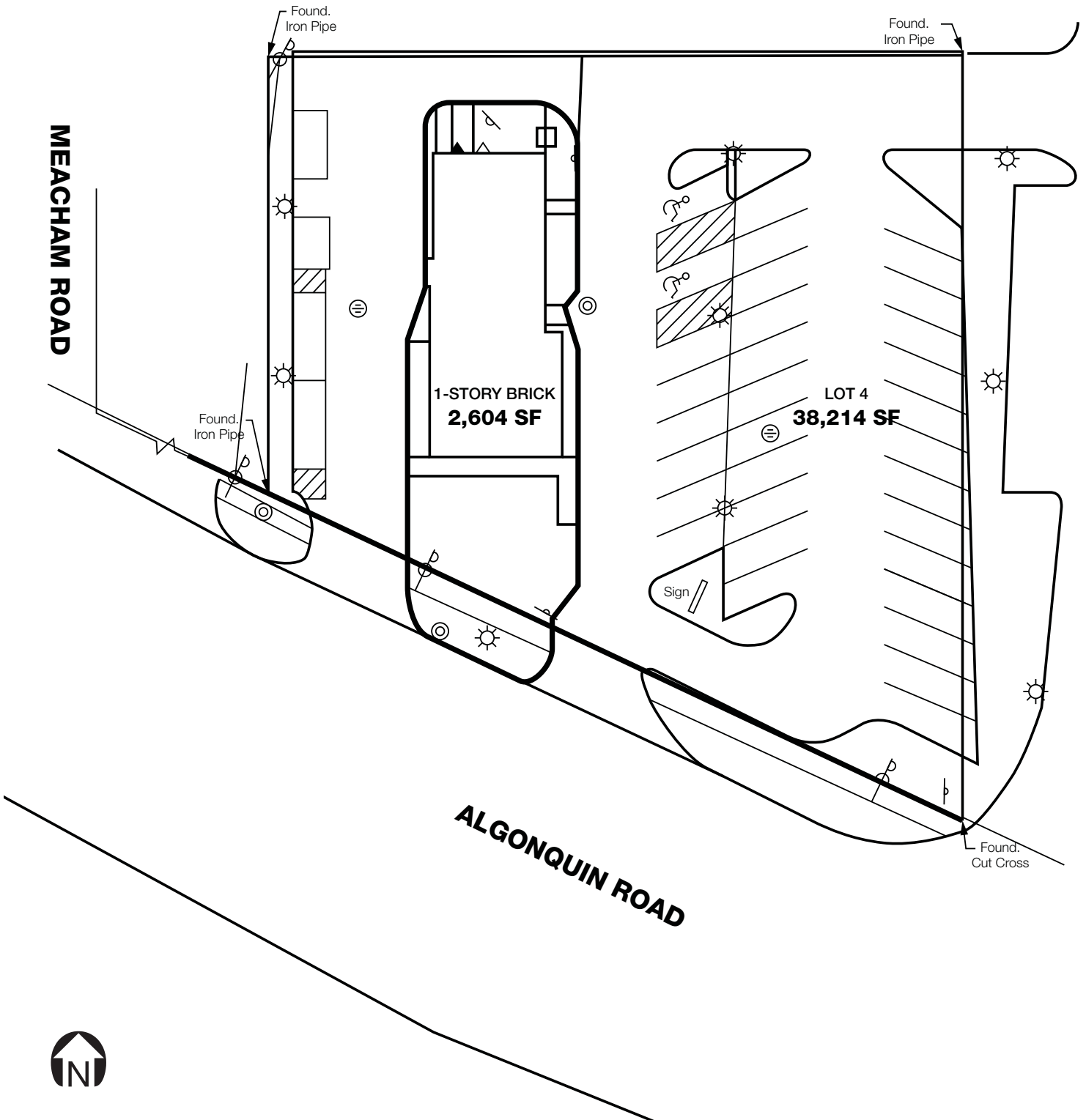


For Lease or Sale

Retail Space

1500 E. Algonquin Road

Schaumburg, IL 60173



Doug Renner
312.275.3137
doug.renner@baumrealty.com

Mark Fredericks
312.275.3109
mark@baumrealty.com

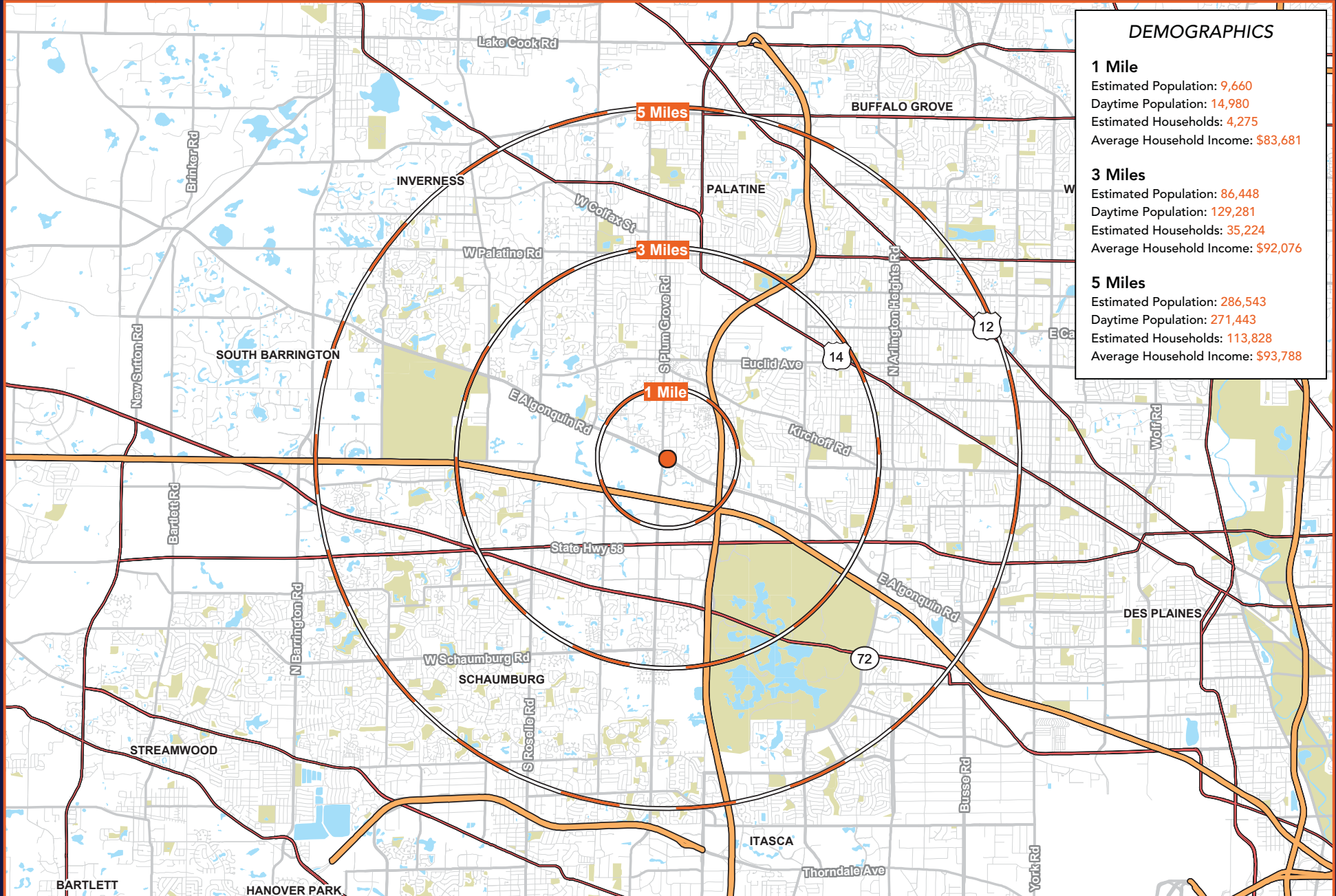






Baum Realty Group
 1030 W. Chicago Ave.
 Chicago, IL 60642
 312.666.3000
 www.baumrealty.com

1500 E. Algonquin Rd. Schaumburg, IL



DEMOGRAPHICS	
1 Mile	
Estimated Population:	9,660
Daytime Population:	14,980
Estimated Households:	4,275
Average Household Income:	\$83,681
3 Miles	
Estimated Population:	86,448
Daytime Population:	129,281
Estimated Households:	35,224
Average Household Income:	\$92,076
5 Miles	
Estimated Population:	286,543
Daytime Population:	271,443
Estimated Households:	113,828
Average Household Income:	\$93,788