

For Lease

Retail Space

1422 N. Milwaukee Avenue

Chicago, IL 60622 | Wicker Park

Located in Wicker Park, which was 4th in Forbes 'Hippest Neighborhood List' in 2015



- Up to 3,600 SF (divisible) of ground floor retail space available
- Opportunity for significant signage along the heavily traveled Milwaukee Avenue
- Located within blocks of both the Damen Blue Line CTA 'L' Station (2.2M Annual Average Riders in 2015) and the Division Blue Line CTA 'L' Station (1.9M Annual Average Riders in 2015)
- Located along the highly trafficked Milwaukee Avenue retail corridor:
10,400 VPD on Milwaukee Avenue
35,000 weekly pedestrians

- Neighborhood co-tenancy includes Brooklyn Industries, Urban Outfitters, Free People, American Apparel, G-Star Denim, Carhartt and Rapha Cycling

DEMOGRAPHIC SUMMARY

	RADIUS		
	.25 MILES	.5 MILES	1 MILE
AVERAGE HHI	\$131,635	\$134,605	\$123,665
DAYTIME POPULATION	3,211	10,492	35,348
RESIDENTIAL POPULATION	12,504	124,282	266,211
ANNUAL RETAIL EXPENDITURE	\$93.9 M	\$370 M	\$1.06 B

Doug Renner
312.275.3137
doug.renner@baumrealty.com

Nicole Cardot
312.275.0371
nicole@baumrealty.com



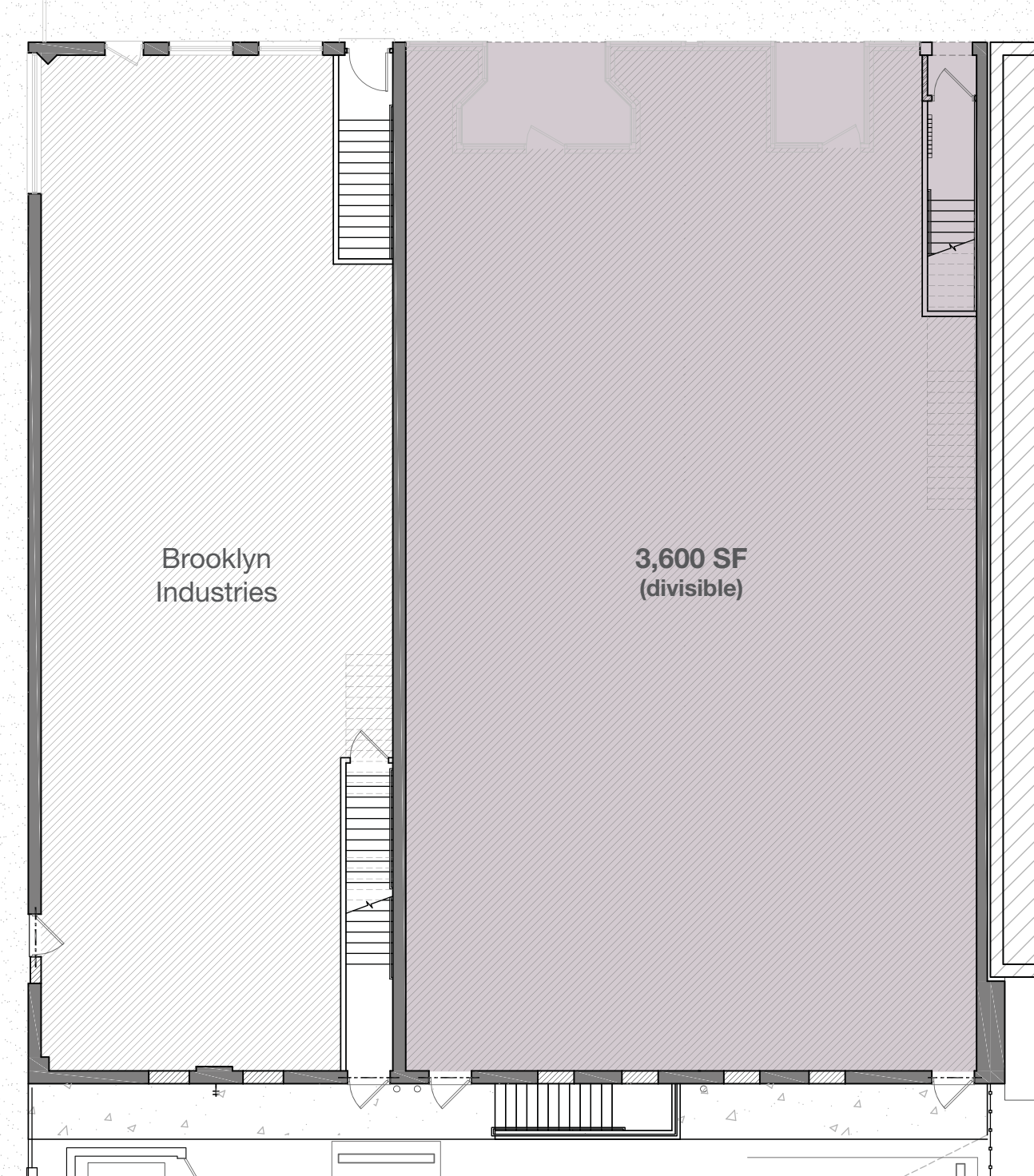
For Lease

Retail Space

1422 N. Milwaukee Avenue

Chicago, IL 60622 | Wicker Park

N. Milwaukee Avenue



Doug Renner
312.275.3137
doug.renner@baumrealty.com

Nicole Cardot
312.275.0371
nicole@baumrealty.com



