

1047 N. Milwaukee Avenue

LIBERTYVILLE, IL 60048

For Lease

RETAIL SPACE

ENDCAP RETAIL SPACE NEAR METRA STATION AND DOWNTOWN LIBERTYVILLE



- ▶ ±2,420 SF end-cap available
- ▶ Black iron available
- ▶ Public parking lot
- ▶ Just north of downtown Libertyville
- ▶ ¼ mile from the Libertyville Metra Train Station
- ▶ Nearby retailers include Rosati's Pizza, Jimmy John's, Egg Harbor, Taco Bell & Starbucks

DEMOGRAPHIC SUMMARY

	1 Mile	3 Miles	5 Miles
Estimated Population	6,713	38,941	123,991
Adj. Daytime Demographics	9,091	41,959	158,706
Estimated Households	2,724	13,849	44,997
Estimated Average Household Income	\$142,063	\$159,676	\$127,476

DOUG RENNER

doug.renner@baumrealty.com

312.275.3137

TREVOR JACK

trevor@baumrealty.com

312.275.3128



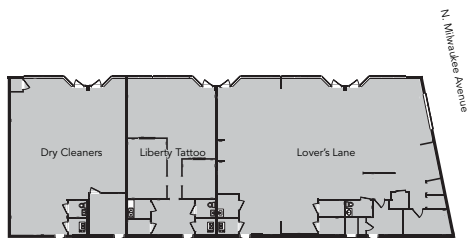
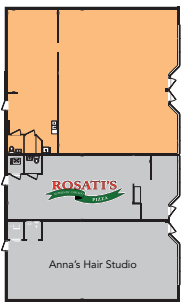
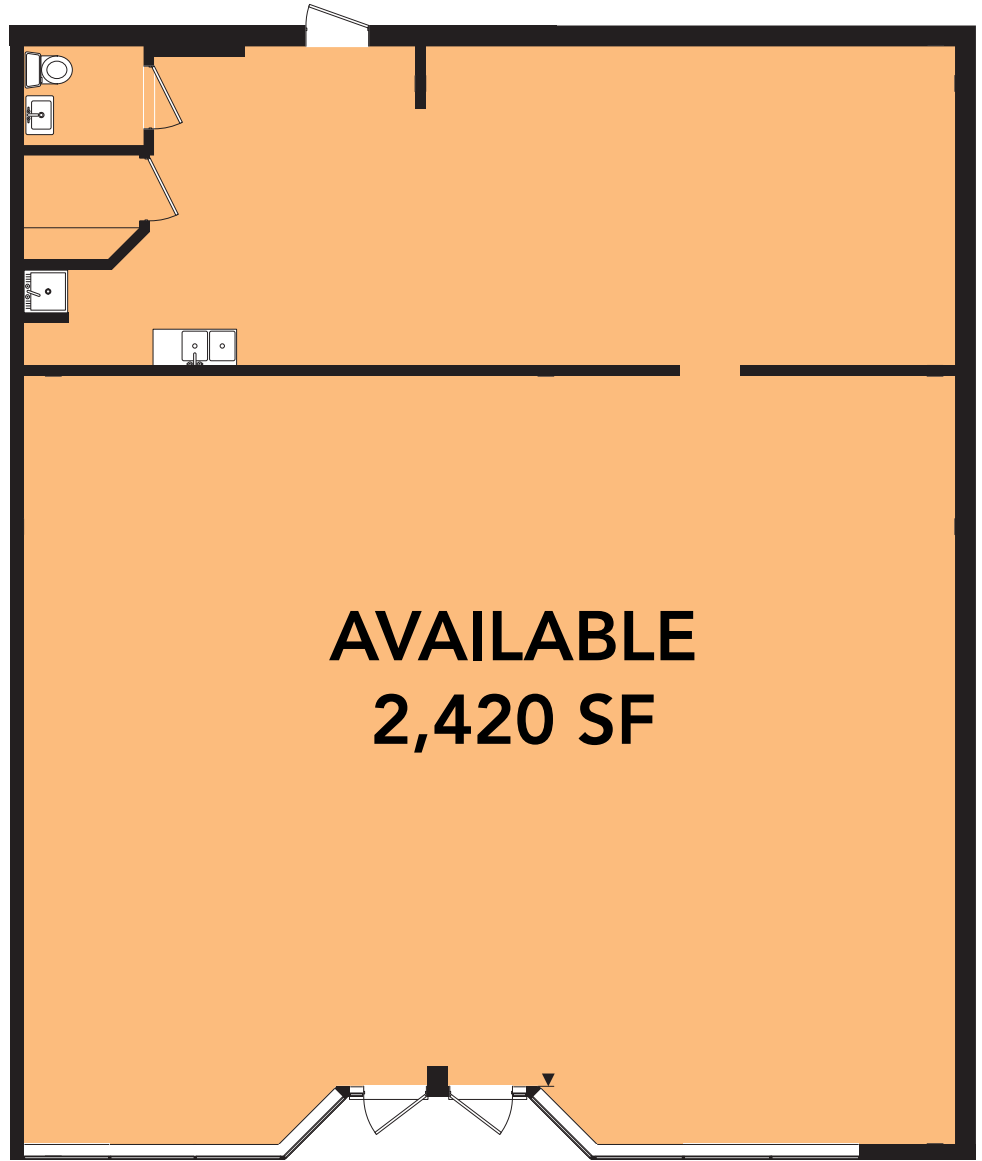
© 2019 All information supplied is from sources deemed reliable and is furnished subject to errors, omissions, modifications, removal of the listing from sale or lease, and to any listing conditions, including the rates and manner of payment of commissions for particular offerings, the terms of which are available to principals or duly licensed brokers. Any square footage dimensions set forth are approximate.

1047 N. Milwaukee Avenue

LIBERTYVILLE, IL 60048

For Lease

RETAIL SPACE



DOUG RENNER

doug.renner@baumrealty.com

312.275.3137

TREVOR JACK

trevor@baumrealty.com

312.275.3128



© 2019 All information supplied is from sources deemed reliable and is furnished subject to errors, omissions, modifications, removal of the listing from sale or lease, and to any listing conditions, including the rates and manner of payment of commissions for particular offerings, the terms of which are available to principals or duly licensed brokers. Any square footage dimensions set forth are approximate.

